

The title "SAP Business One road map" is centered within a light blue geometric frame that resembles a road sign. The frame is composed of a horizontal line at the top, a horizontal line at the bottom, and a diagonal line on the right side that points towards the top right. The background of the slide is a photograph of a paved road stretching into the distance, flanked by green grass and trees, with a bright sun creating a lens flare in the upper right.

# SAP Business One road map

October 2025

# Legal disclaimer

The information in this presentation is confidential and proprietary to SAP and may not be disclosed without the permission of SAP. This presentation is not subject to your license agreement or any other service or subscription agreement with SAP. SAP has no obligation to pursue any course of business outlined in this document or any related presentation, or to develop or release any functionality mentioned therein. This document, or any related presentation, and SAP's strategy and possible future developments, products, and platforms, directions, and functionality are all subject to change and may be changed by SAP at any time for any reason without notice. The information in this document is not a commitment, promise, or legal obligation to deliver any material, code, or functionality. This document is provided without a warranty of any kind, either express or implied, including but not limited to the implied warranties of merchantability, fitness for a particular purpose, or noninfringement. This document is for informational purposes and may not be incorporated into a contract. SAP assumes no responsibility for errors or omissions in this document, except if such damages were caused by SAP's willful misconduct or gross negligence.

All forward-looking statements are subject to various risks and uncertainties that could cause actual results to differ materially from expectations. Readers are cautioned not to place undue reliance on these forward-looking statements, which speak only as of their dates, and they should not be relied upon in making purchasing decisions.

For all recent and planned innovations, potential data protection and privacy features include simplified deletion of personal data, reporting of personal data to an identified data subject, restricted access to personal data, masking of personal data, read access logging to special categories of personal data, change logging of personal data, and consent management mechanisms.

# About the SAP Business One road map

In the **road map for the SAP Business One solution** you can learn about SAP innovations along four different timelines:

1. [Recent innovations](#) for SAP Business One that have been launched in the past weeks or months and can already be purchased
2. [Product vision](#), providing a high-level and long-term business perspective on innovations for SAP Business One
3. [Product direction](#), providing a long-term perspective on high-level development plans for innovations—inspired by your requirements
4. [Planned innovations](#) for SAP Business One that are intended to be launched in the short term or midterm

# Table of contents

## Product overview

- SAP purpose and vision
- KPIs for SAP Business One
- Digital enablers
- Product description
- Recent innovations

## Product direction

- Product vision and areas of future investment
- Product road map overview
- Planned innovations





# Product overview

PUBLIC

This presentation and SAP's strategy and possible future developments are subject to change and may be changed by SAP at any time for any reason without notice. This document is provided without a warranty of any kind, either express or implied, including but not limited to the implied warranties of merchantability, fitness for a particular purpose, or noninfringement.





Our purpose

**Help the world  
run better  
and improve  
people's lives**



PUBLIC

This presentation and SAP's strategy and possible future developments are subject to change and may be changed by SAP at any time for any reason without notice. This document is provided without a warranty of any kind, either express or implied, including but not limited to the implied warranties of merchantability, fitness for a particular purpose, or noninfringement.

# We bring out the best in every business

Our vision





# SAP's best-selling ERP solution by number of customers



**83,000+**

**customers**

with **1.2+**  
million users



**500+**

**partner solutions**

delivered by  
~**300** partners



**50**

**country localizations**

and **28** languages per  
customer's choice



**7,000+**

**subsidiaries**

running the product for  
**360+** large enterprises



**850+**

**partners worldwide**

implementing and  
servicing customers



**170+**

**countries**

with customers and  
partners

# SAP Business One:

## Strong ERP core for SMEs designed to ease extending and complementing

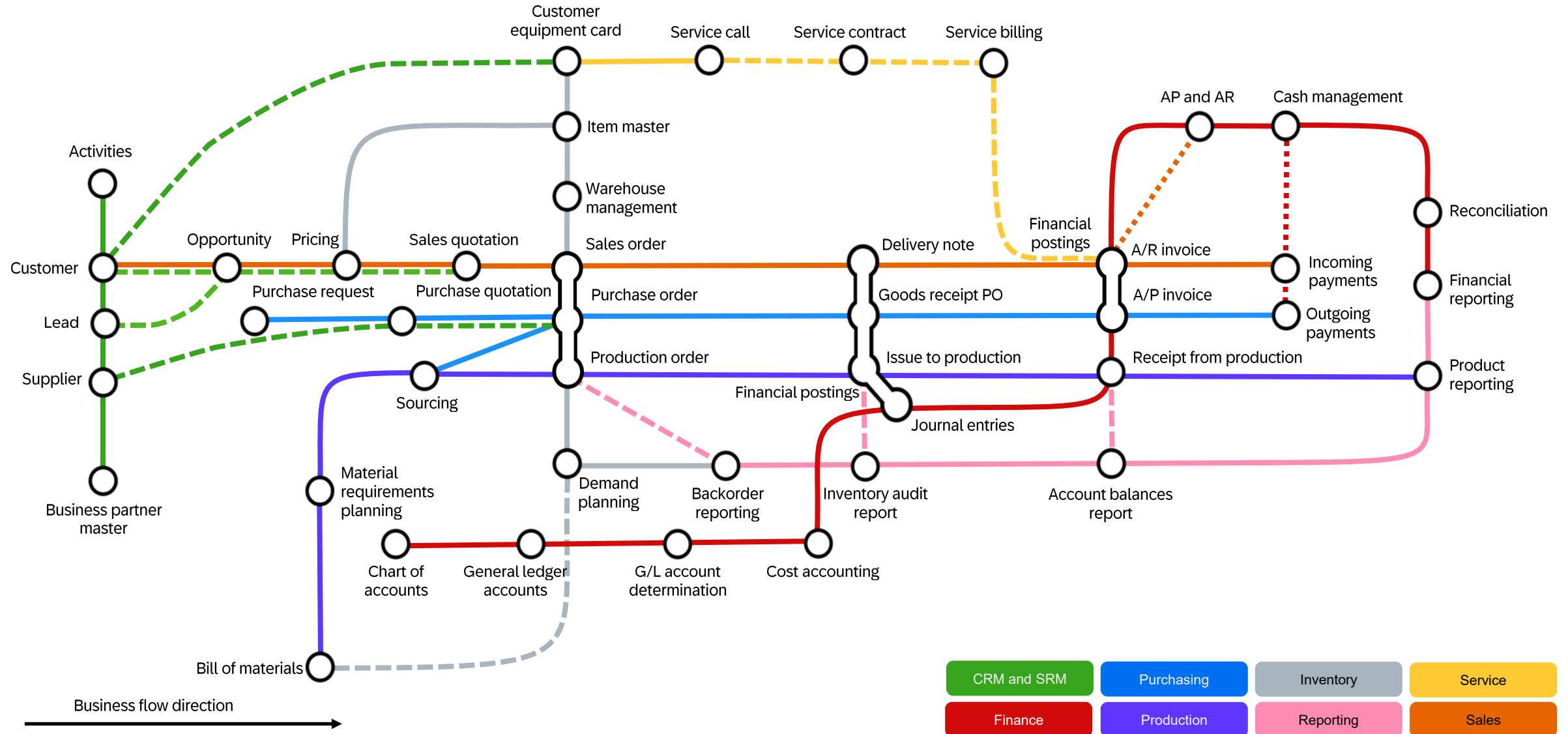
### Digital enablers (enrich and extend the core):

- AI and machine learning
- SAP Business Technology Platform (SAP BTP) cloud services
- Analytics
- Mobile technologies

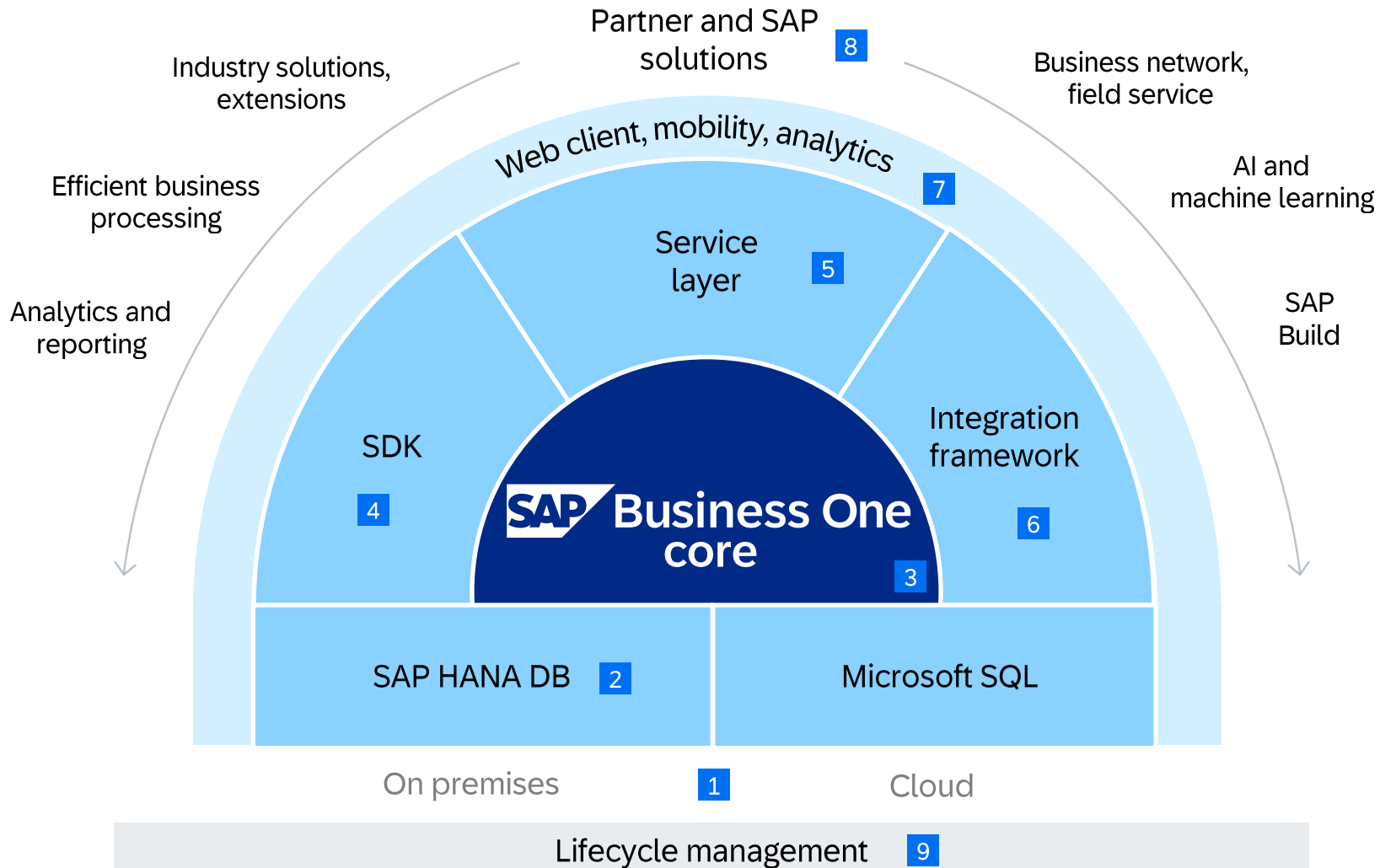




# SAP Business One process metro map



# SAP Business One solution



## Cost

- 9 Low cost of ownership and efficient support + cloud control center

## Usability

- 7 Web client
- 7 Modern front end and analytics

## Comprehensive business scope

- 3 All standard business processes covered
- 8 Extending the solution scope based on extensibility layer
- 6 Robust integration and collaboration relying on service layer and software development kit (SDK)
- 4 Basic application programming interfaces (APIs)

## State-of-the-art technology

- 2 Running on in-memory technology
- 5 Interface for SAP HANA and Microsoft SQL applications
- 1 Full deployment flexibility

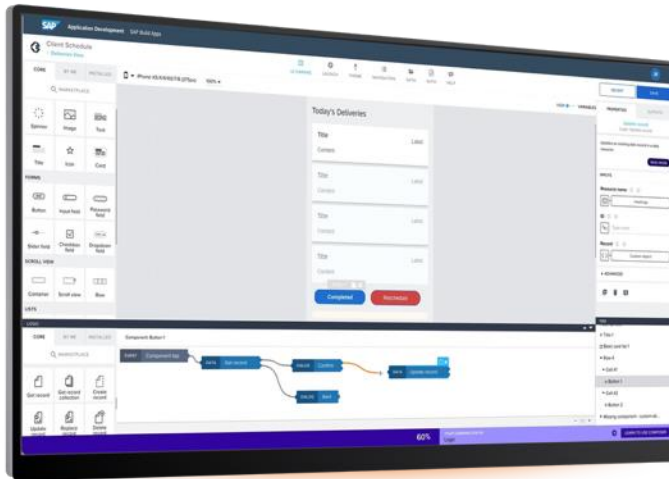
# SAP Build

Create enterprise apps, automate processes, design business sites with drag-and-drop simplicity

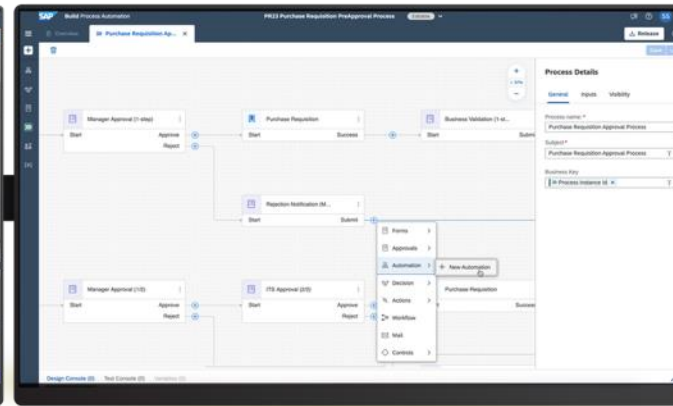
Compose apps

Automate processes

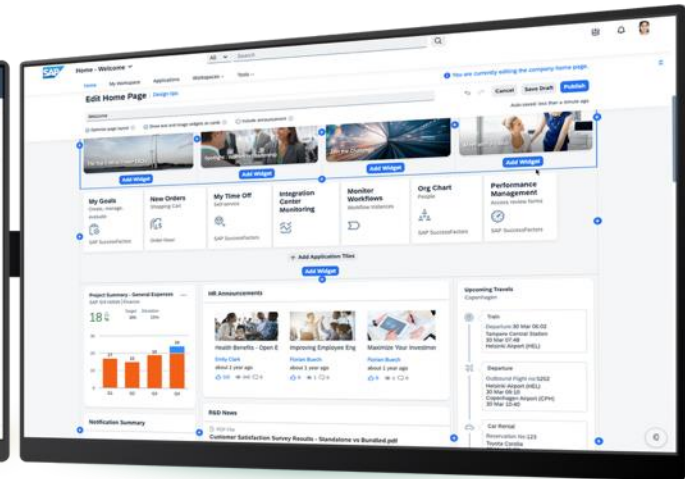
Design business sites



SAP Build Apps



SAP Build Process Automation



SAP Build Work Zone

Build visually  
Integrate smoothly  
Collaborate securely

SAP Business Technology Platform

**SAP Business Technology Platform** brings together application development, data and analytics, integration, and AI capabilities into one unified environment optimized for SAP applications.

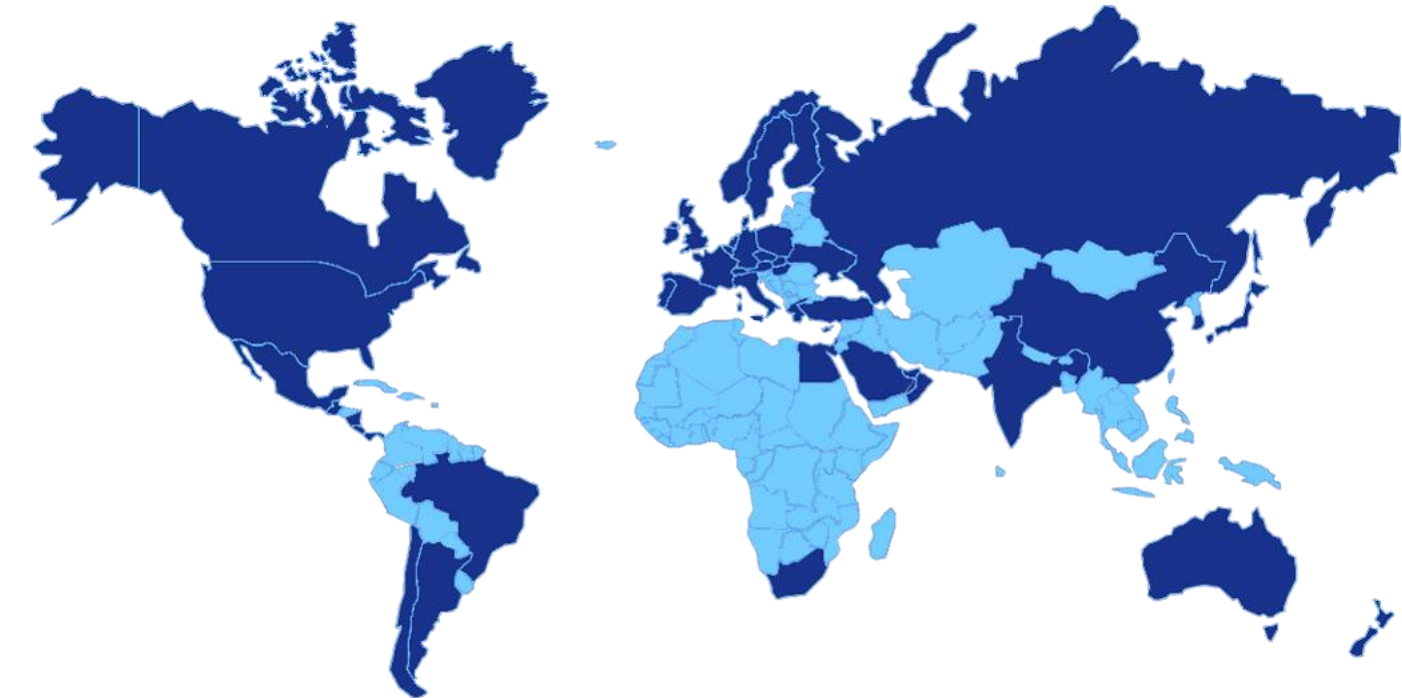
# SAP Business One used in more than 170 countries

## Master the challenge of globalization in your business

Supported localizations (50)			
Argentina	Finland	Mexico	Slovakia
Australia	France	Netherlands	South Africa
Austria	Germany	New Zealand	South Korea
Belgium	Greece	Norway	Spain
Brazil	Guatemala	Oman	Sweden
Canada	Hong Kong, China	Panama	Switzerland
Chile	Hungary	Poland	Turkey
China	India	Portugal	Ukraine
Costa Rica	Ireland	Puerto Rico	United Arab Emirates
Cyprus	Israel	Qatar	United Kingdom
Czech Republic	Italy	Russia	United States
Denmark	Japan	Saudi Arabia	
Egypt	Lebanon	Singapore	

Countries making use of localizations

Customers in more than 120 countries use localization of other countries, own customization, or a partner solution.



Supported system languages (28)\*

Arabic, Chinese (simplified and traditional), Czech, Danish, Dutch, English (UK and U.S.), Finnish, French, German, Greek, Hebrew, Hungarian, Italian, Japanese, Korean, Norwegian, Polish, Portuguese (Brazil), Portuguese, Russian, Slovak, Spanish (Latin America), Spanish, Swedish, Turkish, and Ukrainian

\*A convenient option for making additional languages available is using a partner solution (for some countries bundled with functional add-ons) or to define customer-specific UI terms using the custom language tool as detailed in SAP Note [1757764](#).



# Recent innovations

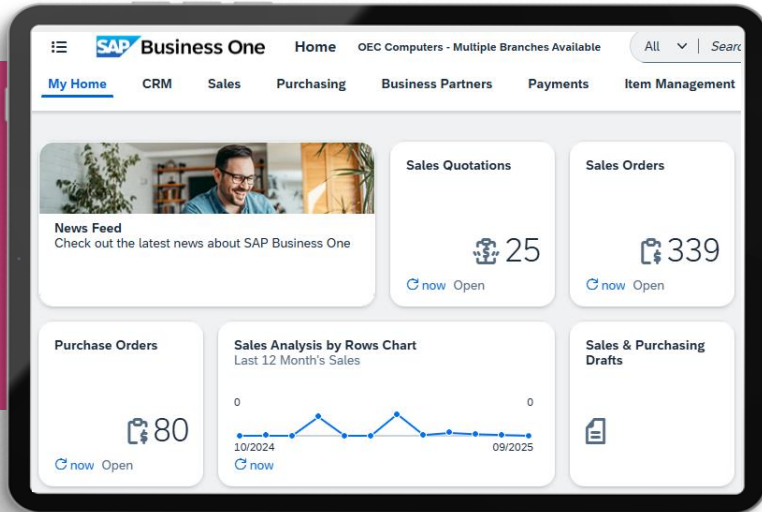
PUBLIC

This presentation and SAP's strategy and possible future developments are subject to change and may be changed by SAP at any time for any reason without notice. This document is provided without a warranty of any kind, either express or implied, including but not limited to the implied warranties of merchantability, fitness for a particular purpose, or noninfringement.





# SAP Business One, Web client: The best of all worlds



## Web client benefits

- Supports smooth working with SAP Business One using native web browser
- Offers the core business logic and processes in a new user experience based on the SAP Fiori design system
- Reads and writes from and to the same company database used with SAP Business One

## Business processes coverage

- Company configuration framework
- Sales and purchasing documents, including blanket agreement, recurring transactions, and down payments
- CRM, service, and timesheet
- Basic finance (chart of accounts, journal entries, journal vouchers, posting templates, recurring postings, and exchange rate table)
- Payments
- Items and business partners master data
- Inventory transactions (goods issue and receipt, stock counting, inventory transfer) and bills of materials
- Document drafts and approval process
- Sophisticated analytics capabilities

## Integration and extensibility

- Microsoft 365 OneDrive export (Excel, Word)
- Collaboration using Microsoft Teams
- E-mail using Microsoft Outlook 365
- User-defined fields, tables, and objects
- Web client user interface API (UI API)
- User-defined values: Arithmetic and logical formula, central management
- SAP Companion service (web assistant) adoption

# SAP Business One, Web client: Analytics

## Powerful analytics at the tip of your fingers

### List view: Object-centered analytics

Use sophisticated filtering (including date offset) and visualization (including date aggregation) capabilities for deriving and presenting the data you need in every object list view

### General overview: Gather multiple data sources

Design cards based on any list view, analytical chart, user-defined object (UDO), user-defined table (UDT), or user-defined query (UDQ), showing the data you need from various aspects, including KPI setup

### User-defined queries

Manage, create, edit, and preview UDQs; presented as standard list view and can be leveraged as a data source for cards on general overview

### Linked views: Contextual analytics

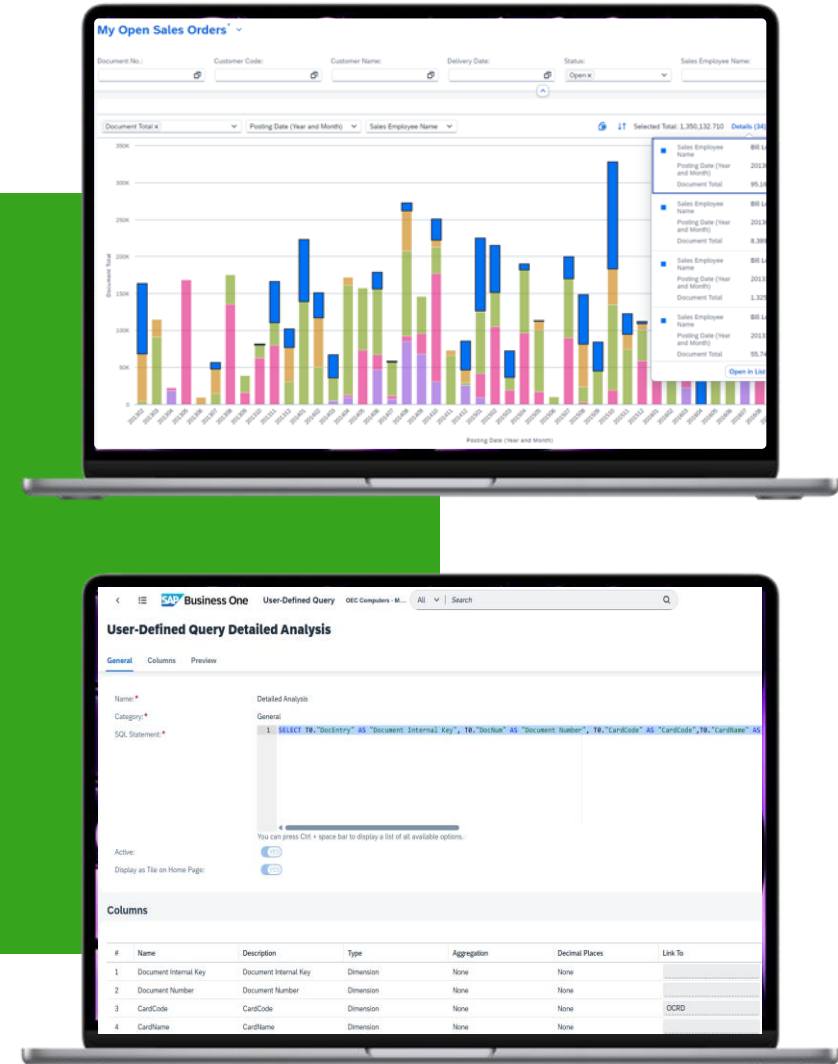
Assign any view, general overview, or UDQ to any object header and line level to derive record-specific data

### Export and import views: Collaborate across companies

Export selected views (and links) to a file that can be imported into other company databases

### Share by e-mail: Collaborate among users

Embed a direct link to any view, general overview, or UDQ in e-mail body and send to your colleagues



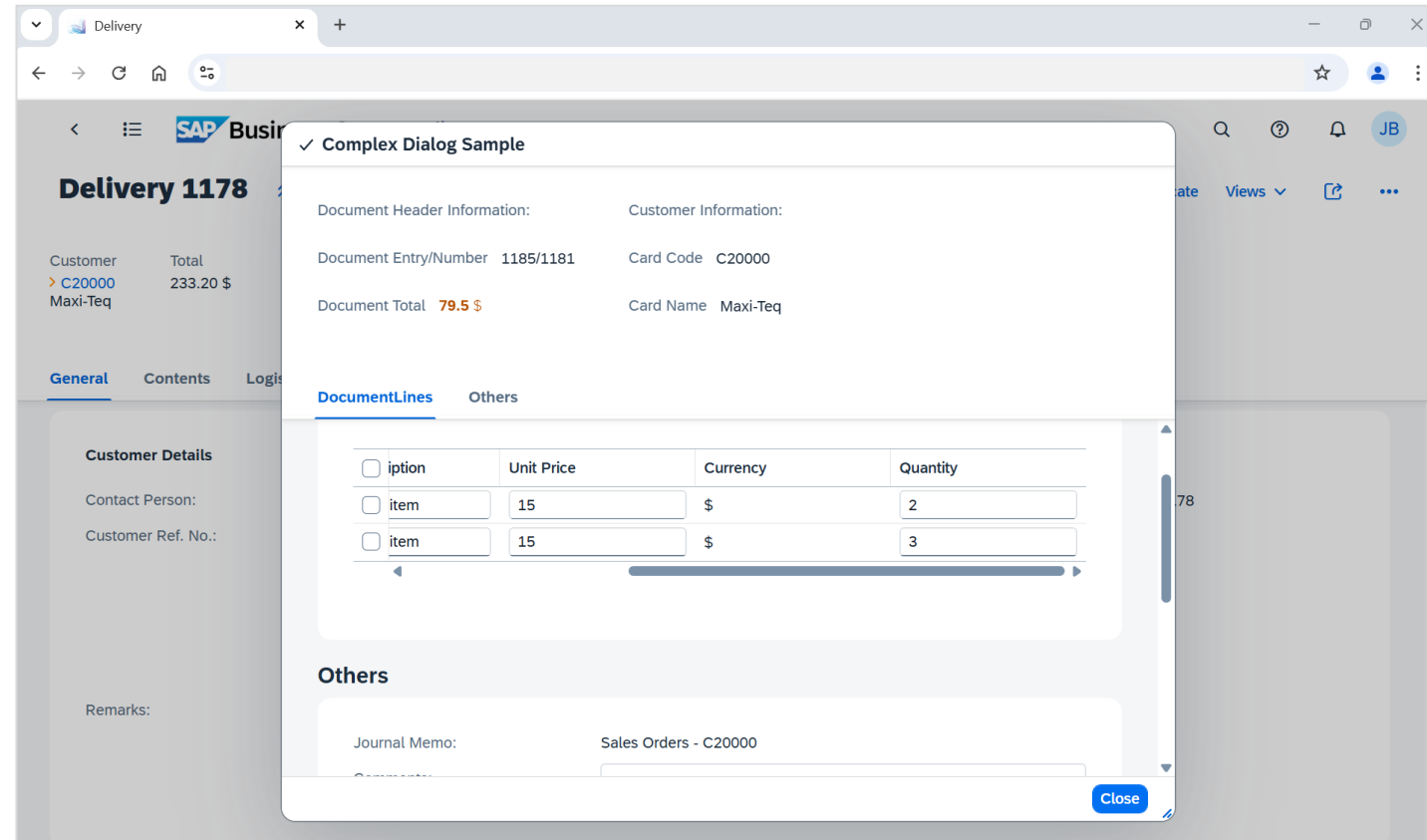
# SAP Business One, Web client: UI API framework

## UI API framework

- Ability to customize Web client views
- Support for UI controls: Complex Dialog, Choose from List, and more
- Support for events: ANCOR, Refresh API, and more
- Samples and online help

## Develop using VS Code IDE

- Creation of a project in VS Code
- Selecting the relevant views to extend
- Previewing the relevant changes
- Debugging
- Packaging and deployment using the extension manager
- Support for TypeScript
- Support for additional views, such as item master data and more



# Identity and authentication management



- SAP Business One supports the identity and authentication management service, allowing users to authenticate with their identity provider (IdP) user when signing in to SAP Business One in on-premises and cloud (using cloud control center) deployments.
- Two-factor authentication (2FA) can also be enabled for an extra layer of security, helping to protect user accounts against unauthorized access.

## The latest enhancements in identity and authentication management

- Checks Active Directory Domain Services user status
- Bypasses single sign-on (SSO) using registry key update
- Maintains password blocklist
- Imports identity provider (IdP) using CSV file
- Supports technical user authenticating using the OpenID Connect (OIDC) mechanism
- Remembers user's IdP sign-in credentials for automatic sign-in to the SAP Business One client
- Remembers user's IdP sign-in credentials for automatic sign-in to the SAP Business One client
- Offers back-channel logout setting in the extension SSO manager (log out user from all associated relying parties)

### On-premises



SAP Help



Blog



YouTube

### Cloud (cloud control center)



SAP Help



Blog



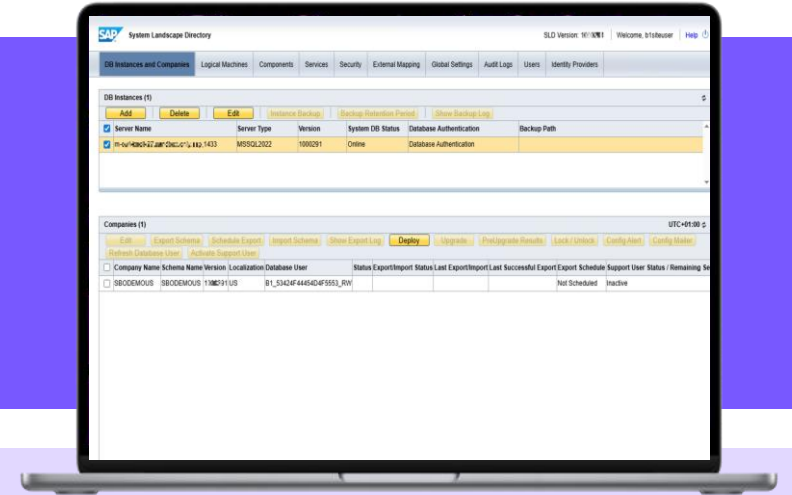
YouTube

# Lifecycle management

Keeping SAP Business One secure, up to date, and intuitive to run

Lifecycle management helps ensure your SAP Business One system stays secure, reliable, and intuitive to operate throughout its entire lifecycle. It spans:

- Deployment and installation
- Upgrade and maintenance
- Backup and recovery
- User and identity management
- Monitoring and compliance



## Key highlights up to feature pack 2508



### SBO mailer

- SBO mailer is moved from server tools interface to the job service web interface
- New authentication method OAuth 2.0 for Microsoft 365 is now available for use with the SBO mailer



### System landscape directory (SLD)

- Support user activation using SLD
- Define backup retention period for database instances (version for SAP HANA)
- Schedule exports for multiple companies (version for SAP HANA)
- Support SUSE Linux Enterprise Server 15 SP6 (version for SAP HANA)
- Support dynamic encryption



### SAP Crystal Reports for SAP Business One

- A new compatibility check validates version alignment between SAP Crystal Reports and SAP Business One components during SAP Crystal Reports components upgrade



# Artificial intelligence and automation

## Extensibility readiness for adoption of AI services

### Artificial intelligence: AI services and tools from SAP

- **Document Information Extraction** service and available integration to SAP Business One: SAP AI Service running on SAP BTP and leveraging machine learning to streamline processing of invoices from vendors
- **SAP Build Process Automation:** A solution helping customers maintain their edge and free employees from repetitive and error-prone tasks (seven automation best-practice templates available to be used with SAP Business One)
- **AI Foundation on SAP BTP:** A full set of services for AI developers to build robust AI-driven extensions and applications

### Artificial intelligence: Solutions from SAP partners

- SAP Business One extensibility is ready for adoption of AI services, enabling partners to create and innovate with AI services and most recent AI agents and develop own extensions and applications leveraging the latest generative AI technology.
- Partners are making use of SAP BTP tools for the solution development.
- Each customer has the freedom to choose the appropriate solution to meet that customer's needs.



# SAP Business One 10.0: Key highlights up to feature package (FP) 2508 (1/6)

## Web client

### Document support

- Sales documents: Quotations, orders, deliveries, returns, return requests, A/R invoices, A/R reserve invoices, A/R credit memos, A/R down payment invoices, A/P down payment invoices, blanket agreement, and recurring transactions
- Purchasing documents: Purchase requests, quotations, orders, goods receipt POs, goods returns, goods return requests, A/P invoices, A/P reserve invoices, and A/P credit memos
- Inventory documents: Goods issues, goods receipts, inventory counting, and inventory transfer

### Analytics enhancements

- Advanced analytics content and editor incl. import and export views
- User-defined queries
- Linked list views
- KPI setup

### Technological enhancements

- Enterprise search: Supported on SAP HANA
- Support for single sign-on

### Functionality

- Company configuration framework
- Outgoing and incoming SnB/bin location selection
- Service calls and solution knowledge base
- Relationship map
- Document opening and closing remarks
- Approval process and drafts incl. approvers
- Business partner (BP) and item master data
- BP catalog number and bar code
- Multiple branches
- Freight charges
- Exchange rate entry and exchange rate table
- Authorizations and data ownership
- Incoming and outgoing payments
- Opportunities, activities, and notifications
- Bill of materials (BOM)
- Journal entry and chart of accounts
- Journal vouchers and deposits
- Recurring journal entries and journal entry templates
- Equipment card and service contract
- Alternative items
- Timesheet
- Packing slip

### Usability enhancements

- Customizable home page
- Flexible list views
- Special lines in marketing documents
- Reference documents
- Predefined texts
- 28 display languages
- Multilanguage support
- Message preferences
- High-contrast UI theme and Horizon theme
- Attachment management
- SAP Companion adoption
- Microsoft 365 integration to OneDrive (Excel, Word)
- Outlook 365 integration
- Business-card scanning with Document Information Extraction service
- KPIs display in user-defined tiles
- Support for APIs for new views
- Support for “Display in menu” setting for UDTs
- User-defined fields, tables, and objects
- User-defined values: Arithmetic and logical formula
- User-defined values central management
- VS Code plug-ins (URL mashup, apps), iFrame as a tile support
- Web UI APIs: Complex Dialog, New Events

# SAP Business One 10.0: Key highlights up to FP 2508 (2/6)

## Localizations | Legal compliance

### Accounting

- Journal entries series for the period-end closing/exchange rate difference and conversion differences transactions

### Banking

- Bank statement processing (BSP) enhancements

### Electronic invoicing

- EU Peppol electronic invoicing support
- XRechnung e-invoices for Germany
- Electronic Invoice for Israel
- Digital signature support for Israel
- Electronic invoice/KSeF for Poland
- E-billing integration with ClearTax for India
- Online invoicing enhancements for Hungary
- Electronic signing for electronic invoices for Portugal
- E-delivery support for Greece
- Embed PDF support in the electronic document import Wizard
- Veri\*factu communication for Spain
- Electronic Invoice enhancement for Italy

### Tax management

- Support for external VAT calculation for all localizations except Israel
- VAT API for Denmark
- Tax setup APIs for Brazil
- Golden Tax interface update for China
- Multiple e-TDS in the A/P invoice for India

### Tax reporting

- Electronic VAT report export support
- Withholding tax enhancements for Mexico
- Certificazione Unica enhancements for Italy
- Transmitting GST return for Singapore
- SAF-T tax report for Norway
- SAF-T report for Portugal
- E-books incl. online sales reporting with duty and expense classification enhancements for Greece

### Inventory management and tracking

- Cargo tracking and tracing enhancements for the EU

### Audit files

- Audit trail report
- Audit file (FEC) enhancements for France
- SAF-T report for Denmark (mandatory information)

### Printing

- SAP Crystal Reports software layouts for Switzerland

### Other

- Folio enhancements for Chile
- Operating profit and net income for Brazil
- A/P down payment request to support e-TDS for India
- Qualified invoice method for Japan
- 1099 forms enhancements for the United States
- Auto-renumbering for AFE authority for Argentina
- A/R, A/P invoice item invoice with no stock movement

# SAP Business One 10.0: Key highlights up to FP 2508 (3/6)

## Inventory | Distribution | Production

- Serial and batch numbers mgmt. enhancements
- Ability to change unit of measure (UoM) group of an item
- Additional authorization groups for price lists
- Item group name extended to 100 characters
- Support for setting UoM group as inactive
- Reverse and forward serial and batch no. trace report
- FIFO layers report by consumption order
- Drill-down from BOM to item master data
- Inventory counting enhancements
- Extending field length of item description and industry
- Modifying remarks and unified demand forecasts (UDFs) in closed production orders and pick lists
- Support for mass deletion of BOM
- Procurement confirmation wizard based on production orders
- Changing status of sales and purchase type in item master data
- Opening last prices report from item master data
- Displaying preferred vendor name in item master data
- Support for attachments for bill of materials
- Production order variance report extension

## Financial management

- Drill-down to G/L accounts in financial reports
- Posting periods enhancements
- Journal entry remarks extended to 254 characters
- System messages before adding journal entries
- Extended journal entry references
- Updated journal entries with locked posting periods
- Enhanced printing preferences for payments and deposits
- Report refresh enablement
- Management of change log for exchange rates
- IFRS postings for fixed assets
- Tax code determination enhancements in procurement process
- Payment terms enhancements

# SAP Business One 10.0: Key highlights up to FP 2508 (4/6)

## Sales | Purchasing | Service

- Allowing update due date in partially reconciled invoices
- “Add and view” and “Add and close” in A/R and A/P docs
- Printing service calls and contacts
- Hiding blank lines in addresses
- Proc. confirmation wizard support for gross and net modes
- Enabling updating UDFs in closed documents
- Setting problem types, call status, and more as “Active”
- Flexible default “Valid until” date in sales quotation
- Linking single equipment card to multiple BPs
- New document status “Open e-mailed”
- Storing price list no. and name in marketing documents rows
- A/R invoice rows with no quantity postings
- Extended business partner effective price sources
- Ability to hide document remarks
- Copying attachment paths to target documents
- Cancellations of return requests
- Updating consolidating business partner and consolidation type at document level
- Customer and vendor reference number enhancement
- Document information extraction integration enhancement incl. service-type document support
- Display of sales document in procurement wizard if target document is canceled
- Relationship map support for reference documents and opportunity
- Moving rows up and down in marketing documents

## CRM

- Customer and vendor group name extended to 100 characters
- Viewing and updating address UDFs in docs, service calls, and address format setup
- Support for filtering activity reports by UDFs
- Link between contact person and BP address
- Hiding inactive contact persons in BP master data
- Configuring display of employee name
- Telephone field extended to 50 characters
- Foreign name field extended to 200 characters

## Project management

- Interactive Gantt chart
- Sorting order for project stages



# SAP Business One 10.0: Key highlights up to FP 2508 (5/6)

## Administration

- Support for attachments tab in additional objects
- Deleting live collaboration history by date range
- Enhancements in approval process
- Setting warning for single-user validation
- Deactivation of shipping types
- Hiding locked users
- Enhanced user removal management
- Open users—set up form in “Find” mode
- Messages and alerts cleanup tool
- Manual determination of path in general settings
- Adding detailed errors for license imports
- Enhancing license balloon appearance
- Main menu form settings for indirect access users
- Sort forms in user interface configuration template
- Support for "Hide BOM in component" in SAP Crystal Reports layouts
- Enhanced copy of single form settings
- Allowing change log to read-only documents
- Enabling retrieval of a default value of an SAP Crystal Reports parameter
- BP payment terms without price lists
- Change log enhancements for employee master data
- Managing change log for system setup entries
- Providing parameters for dunning letters in SAP Crystal Reports layouts
- Support for dynamic names for electronic files (bank files and Intrastat)

## Authorization enhancements

- Tab-level authorizations in business partner and item master data
- Support for “Find next” function in authorizations form
- Change log entries for authorization user groups
- Authorization to use “Copy table”
- Authorizations for duplicate documents and records
- Authorizations in payments draft report
- Adding authorization to “Remove opportunity”
- Increased number of authorization groups
- New authorizations for timesheet
- Authorization change log

# SAP Business One 10.0: Key highlights up to FP 2508 (6/6)

## Platform | Extensibility

- **SAP HANA 2.0 adoption**
- **Support for SUSE Linux Enterprise Server 15**
- **Service layer configuration UI**
- Service layer support for Microsoft SQL database server
- Service layer support for views on Microsoft SQL
- User-defined values supporting multiple triggers
- UDO and UDT management through Web client
- Extending UDF support to additional objects
- Microsoft 365 integration
- Increasing menu item limit to 2,000
- Extend DI API and service layer coverage
- API access for CR reports
- Integration hub
- Security enhancements
- Support for Microsoft SQL 2022
- Electronic file management enhancement
- Extending service layer coverage
- Linking UDFs to system forms and user-defined objects
- Enabling DI access to system permissions
- Support for Visual Studio 2019 with SAP Business One studio
- Enhancing UI API error handling
- Support for queries through service layer
- Adding queries to menus
- Sizing guide for service layer
- Unification of installation and upgrade packages for SAP Business One
- Query manager enhancements
- Support for SAP Crystal Reports 2020 SP2
- Checkbox type for user-defined field
- UI API VS Code IDE:
  - Support for TypeScript
  - Support for additional views, such as Item master data
- New UI API controls:
  - Dialog view, date and time picker, and more

**Bold = SAP HANA**

## Usability

- **New skin style**
- Enhanced user interface
- User name in license and add-on administration
- **Support for 4K monitors**
- Revised SAP Fiori UI for SAP Business One Service and SAP Business One Sales mobile apps

## Lifecycle management | Cloud

- Identity and authentication management (IAM) introduced in on-premises and cloud deployments
- SBO mailer moved to the job service web interface
- A new authentication method OAuth 2.0 for Microsoft 365
- Compatibility check during SAP Crystal Reports components upgrade
- Support user activation from SLD (on-premises)
- Certificate verification during Installation or upgrade
- Updated demo company databases
- Display certificate expiration dates (cloud)
- Initialization of analytics services during upgrade (cloud)
- Support SUSE Linux Enterprise Server 15 SP6
- Support for Microsoft SQL 2022



# Product direction

PUBLIC

This presentation and SAP's strategy and possible future developments are subject to change and may be changed by SAP at any time for any reason without notice. This document is provided without a warranty of any kind, either express or implied, including but not limited to the implied warranties of merchantability, fitness for a particular purpose, or noninfringement.



**“We’re investing in the future and security of SAP Business One, enhancing its integration with the SAP Business Technology Platform to simplify development, and we’re **expanding the capabilities of its Web client.**”**

**These innovations ensure that SAP Business One **continues to grow and adapt to the evolving needs of small businesses.**”**

Thomas Saueressig, Member of the Executive Board of SAP SE, Customer Services & Delivery  
August 2024 ([Post at LinkedIn](#))



# Product areas of future investment

**Product vision:** SAP Business One is SAP's leading ERP solution for small businesses and the lower midmarket, offering flexible deployment options including multitenant environment provisioned by SAP partners. It provides a globalized and robust business core while enabling cloud extensions through SAP Business Technology Platform and SAP Build solutions, all with a modern and intuitive user experience.

## Core ERP engine

- Offering a highly competitive solution with **intuitive and modern Web client interface**
- Data and system security at the first place
- Improving the product continuously reflecting key customer and partner feedback
- Localization enhancements and addressing legal requirements
- Regular maintenance within efficient model

## Partner co-innovations and extensions

- Further enablement for partner innovations through **SAP Build** and **SAP Business Technology Platform**
- Partners leveraging artificial intelligence technology and SAP AI Services to increase value for customers
- Improving robust developer experience on the Web client through the service layer, including new design concepts, APIs, objects, and tools

## Flexible deployment model with cloud focus

- Giving freedom to choose to deploy SAP Business One on premises (single-tenant) or scale to a multitenant environment provisioned by SAP partners
- Supporting partners in customer's cloud transformation by extending cloud tools managed by partners





## Helping ensure competitiveness

- Enabling fast adoption of intuitive Web client design for new customer and growth opportunities
- Supporting the transformation of the latest innovations into customer value at lower TCO

# SAP Business One releases and related products

## Long-term product road map with continuous innovation

### Core and related products Releases

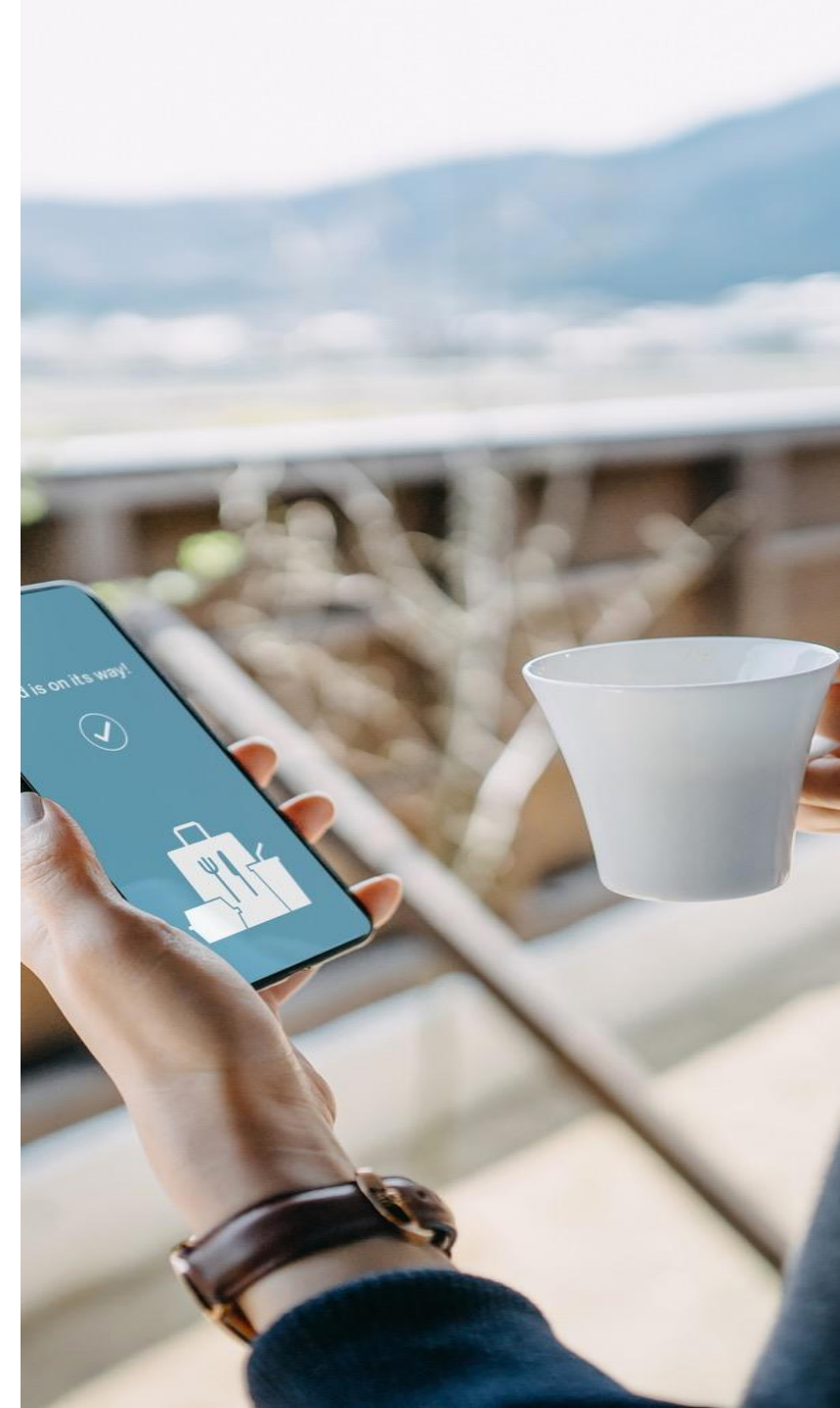
 <b>SAP Business One</b> (version for SAP HANA and MS SQL)	<ul style="list-style-type: none"><li>• Continuous enhancements through version 10 feature packages (FP) and support packages (SP)—SP 2511, FP 2602, SP 2605, FP 2608, SP 2611, FP 2702 ...</li><li>• Feature packages containing any type of change including innovation (such as Web client, integration, SAP BTP enablement, lifecycle management, Customer Influence feedback, and more)</li><li>• Version 11 to follow version 10 in 2027</li></ul>
 <b>Web client</b>	<ul style="list-style-type: none"><li>• Enhancements for working smoothly with SAP Business One using native web browser— accelerated delivery planned for 2025 and 2026</li></ul>
 <b>Cloud</b>	<ul style="list-style-type: none"><li>• Continuous enhancements for SAP Business One Cloud 1.1 (cloud control center) through update patches (PL22, PL23 ...)</li></ul>
 <b>Mobile apps</b>	<ul style="list-style-type: none"><li>• Continuous enhancements for all mobile apps through apps updates</li></ul>

The latest SAP Business One release planning details are always available in SAP Note [2267770](#).

This is the current state of planning and may be changed by SAP at any time.

PUBLIC

This presentation and SAP's strategy and possible future developments are subject to change and may be changed by SAP at any time for any reason without notice. This document is provided without a warranty of any kind, either express or implied, including but not limited to the implied warranties of merchantability, fitness for a particular purpose, or noninfringement.



# SAP Business One, version 11

## Introduction of new generation of cloud management tools



### Lifecycle management

- **Optimize deployment and upgrades**
  - Simplified installation and update processes
  - Introducing automation and component in-place upgrades
  - Exploring the potential use of containerization technology to enhance deployment flexibility and scalability
- **Unification of system landscape directory (SLD)**
  - A single SLD developed for cloud and on-premises deployments
  - Deployment type selection allowed during installation and runtime
- **Connected SLD**
  - Connection with SAP backend for smooth lifecycle management operations

### Cloud operation center managed by partners

- **New generation of cloud control center**
- **Enhance identity and authentication**
  - Strengthening SSO, multifactor authentication, and modern authentication methods

### Cloud-native integration

- **Deployment on leading hyperscaler platforms**
- **Enablement of native cloud storage integration**
  - Smooth connectivity to SharePoint, Google Drive, OneDrive, and other cloud storage platforms

### Functionality

- Continuous Web client enhancements
- Item variants
- BOM versioning

### Artificial intelligence

- Product extensibility enhancements for AI adoption by SAP partners

### First release to come in 2027

- Further enhancements in feature packages based on partner and customer feedback
- Limited time of overlay with version 10 deliveries

This is the current state of planning and may be changed by SAP at any time.

PUBLIC

This presentation and SAP's strategy and possible future developments are subject to change and may be changed by SAP at any time for any reason without notice. This document is provided without a warranty of any kind, either express or implied, including but not limited to the implied warranties of merchantability, fitness for a particular purpose, or noninfringement.

# SAP Business One

## Product road map overview: Key themes and capabilities

### Recent innovations

#### Core

- Web client sales, purchasing, service, inventory, and analytics functionality
- Continuous innovations based on market feedback (Customer Influence program)
- Enabling workflow integration based on SAP Build Process Automation bots
- Enabling document templates with SAP Build Process Automation

#### Globalization

- EU Peppol: Utilization of the SAP Document and Reporting Compliance solution Peppol exchange service cloud edition
- Singapore: Submission of GST return enhancements
- China: Golden Tax enhancements
- Germany: ZUGFeRD invoice import support in electronic document import wizard
- Israel: Donation model support
- Greece: Support for e-delivery
- Argentina: Concurrency issue in folio number assignment
- Hungary: Deferred VAT support for down-payment invoice
- Spain: Software certification support
- India: Multiple e-TDS support
- Greece: Support for e-delivery enhancement

#### Mobile

- Service and sales apps update for Microsoft SQL Server, iOS, and Android

#### Extensibility and platform

- Identity and authentication management (IAM) introduction
- Enhanced service layer API including support for Microsoft SQL
- Microsoft 365 integration (Word, Excel, OneDrive)
- Support for SUSE Linux Enterprise Server 15 SP6
- Support for Microsoft SQL 2022

#### Cloud

- Introduce IAM in SAP Business One cloud control center
- Lifecycle management enhancements (tenant management, certificate management, and various operational optimizations across cloud control center)

### Planned innovations

#### Core

- Web client extended sales, purchasing, payments, service, financials, production, inventory, analytics, and administration functionality
- A/P invoice creation automation using Document Information Extraction service in the Web client
- Continuous innovations based on market feedback (Customer Influence)
- Microsoft Outlook 365 integration enhancements

#### Globalization

- Change log report enhancements
- Germany: Adoption of new ERIC versions for ELSTER
- France: Support for electronic invoice receiving 2026
- Brazil: unencumbered tax support enhancement
- Embedded PDF creation
- Mexico: DIOT report enhancement
- Argentina: CAEA (Authorization Code in Advance)
- India: ISD documents availability in DI API and service layer
- Poland: Electronic invoice (KSeF) enhancement

#### Extensibility and platform

- Enhanced service layer API
- Web client extensibility: UI API and VS Code IDE
- Webhooks support
- Support for Microsoft Windows Server 2025
- Support for SAP HANA 2.0 SPS08 87 | SUSE SLES 15 SP7
- Principal propagation (SAP BTP, Azure)
- Lifecycle management enhancements (Tomcat split for server tools)
- Microsoft 365 Integration: Transitioning from job service to a dedicated component

#### Cloud

- Certificate renewal (using Reconfig)
- License assignment consistency check
- Enhanced version handling

### Product direction

#### Core

- Extended Web client business process coverage
- Continuous innovations based on market feedback (Customer Influence)
- Optimized scalability and performance
- Simplification of landscape and deployment, support for containerization approach

#### Globalization

- Enhancement of existing markets and regions
- Integrations to electronic fiscal services
- IFRS compliance

#### Analytics

- Insight to action (data mining)
- Predictive, pervasive, and scalable
- Built-in content

#### Mobile

- Continuous innovations based on market feedback

#### Extensibility and platform

- Enhanced service layer API
- Enhanced Web client extensibility
- Event service support
- Support for virtualization platforms
- Upgrade simplification (support for component upgrade)

#### Cloud

- Upgrade simplification (component upgrade plus “in-place” upgrade for service unit)
- Backup management (SQL and SAP HANA)
- License server optimizations (such as changing license server in existing service unit)
- Expose service unit component service URLs to resellers
- Enhanced certificate lifecycle management (modern solution for handling short-lived certificates)

This is the current state of planning and may be changed by SAP at any time without notice.

PUBLIC

This presentation and SAP's strategy and possible future developments are subject to change and may be changed by SAP at any time for any reason without notice. This document is provided without a warranty of any kind, either express or implied, including but not limited to the implied warranties of merchantability, fitness for a particular purpose, or noninfringement.



# SAP Business One

## What's coming next: Outlook on core solution delivery for the next releases (SP 2511, FP 2602)

### Business processes and legal compliance

---

- High-value improvement requests (Customer Influence)
- Change log report enhancements
- Creating SAP Crystal Reports print layouts with attached XML
- Electronic file manager enhancement
- Electronic invoice enhancements for Argentina
- Document printing enhancement for Argentina
- Electronic documents enhancements for Israel
- Unencumbered tax enhancement for Brazil
- Electronic Invoice for France
- Central deposit support for multiple branch companies
- Down payments enhancement
- Electronic invoicing KSeF enhancements for Poland
- Electronic reports enhancements for Poland

### Cloud and infrastructure

---

- Enhanced security and compliance
- Expanded service layer coverage
- Tomcat split (split Web components to run under own Tomcat instance)
- Modern authentication for SAP Business One mailer
- Microsoft 365 Integration: Transitioned from job service to a dedicated component
- Certificate verification (detect incompatibility during installation)
- Certificate renewal using Reconfig (cloud)
- Optimized identity and authentication (remembering IdP sign-in preference, SSO best practices for Web client, set “superuser” during binding, UX enhancements)
- License inconsistency check
- Support latest platform updates (such as SAP HANA 2.0 SPS08 87, SUSE SLES 15 SP7, Windows SQL 2025)
- Remote support platform (RSP) PL 20 (enhancing security, user mgmt, backup . . .)

This is the current state of planning and may be changed by SAP at any time.

# SAP Business One

## What's coming next: Outlook on Web client delivery for the next release (FP 2602)

### Business processes

---

#### Extended usability support

- Process map initial delivery
- Enhanced notification framework
- Enhanced UI patterns

#### Extended business scope coverage

- Marketing documents: ATP, landed cost, A/R correction invoices, A/P correction invoices, pricing, document generation wizard, purchase procurement wizard, purchase quotation wizard, and payment wizard (view)
- Inventory: Pick and pack, inventory opening balances, and inventory posting
- Production: Production orders and resources

#### Business scope fine-tuning

- Extended setting and setup support
- Performance enhancements
- Marketing and inventory document enhancements

#### Analytics and reporting

- Initial delivery of cross-tab reporting functionality
- SAP Business One deployment of SAP Crystal Reports
- Printing support

### Extensibility and integration

---

#### Web client user interface API (UI API)

- Webhooks initial delivery
- Extend Web client UI API control support
- Extend Web client UI API views support

#### User-defined value

- Extend object support coverage
- Support UDO and UDT

#### Microsoft 365 integration

- Enhanced mail support
- Enhanced attachments support

This is the current state of planning and may be changed by SAP at any time.

# Planned innovations: **Core**

## Global, highly scalable real-time ERP

### Feature

Optimize core business processes and continuously deliver enhancements and new features, based on [Customer Influence](#)

- Optimize functions in logistics and inventory
- Optimize functions in CRM and service
- Optimize functions in financial
- Enhance usability
- Enhance data protection and privacy
- Integrate SAP solutions adding value for SAP Business One customers

### Lifecycle management

- Streamline upgrade and installation processes
- Enhance core stability and system robustness
- Improve identity and authentication management
- Boost job service performance and monitoring
- Optimize data import capabilities
- Help ensure compatibility with latest platform updates
- Enable Tomcat split for server tools

This is the current state of planning and may be changed by SAP at any time.

PUBLIC

This presentation and SAP's strategy and possible future developments are subject to change and may be changed by SAP at any time for any reason without notice. This document is provided without a warranty of any kind, either express or implied, including but not limited to the implied warranties of merchantability, fitness for a particular purpose, or noninfringement.



# Planned innovations: **Web client**

Extend functional scope to cover end-to-end scenarios

## Feature

### Extended business logic coverage and user experience

- Sales and purchasing (including procurement wizards, document generation wizard)
- Service
- Financials (including fixed assets)
- Payments support (including bank reconciliation and payment wizard and bank statement processing)
- Inventory
- Projects
- Production (including material resource planning)
- Human resources
- Administration and setup

### Analytics, reporting, and printing

- Extended analytics
- Additional reporting content
- Design capabilities
- Support for printing

### Integration and extensibility

- Extensibility capabilities (such as UI API, user-defined values, webhooks)
- Microsoft 365 integration enhancements
- Outlook 365 integration enhancements
- A/P invoice creation automation using Document Information Extraction service

This is the current state of planning and may be changed by SAP at any time.

PUBLIC

This presentation and SAP's strategy and possible future developments are subject to change and may be changed by SAP at any time for any reason without notice. This document is provided without a warranty of any kind, either express or implied, including but not limited to the implied warranties of merchantability, fitness for a particular purpose, or noninfringement.





# Planned innovations: **Globalization**

## Legal compliance and localization enhancements

### Feature

- Legal compliance and localization enhancements generically or specifically (legal requirements, business practice, statutory reporting, and default values)
- Electronic documents framework enhancements and country-specific built-in content using the electronic file manager add-on, electronic documents service, and integration framework
- Electronic documents service component enhancements
- Further integration and leveraging of existing cloud services from SAP for legal adaptations, such as SAP Document and Reporting Compliance

### Country-specific changes

- All: Change log report enhancements
- Argentina: CAEA support
- Brazil: Unencumbered tax for A/P documents
- Brazil: Tax reform support
- Germany: Adoption of the new ERiC versions for ELSTER
- Germany: ZUGFeRD invoice generation
- France: Support for electronic invoice receiving 2026
- India: E-way bill support for stock transfer
- Israel: E-invoice enhancement
- Israel: Import to Hashavshevet support
- Mexico: DIOT report enhancement

This is the current state of planning and may be changed by SAP at any time.



# Planned innovations: **Extensibility**

Extend SAP Business One for verticals  
and custom scenarios

## Feature

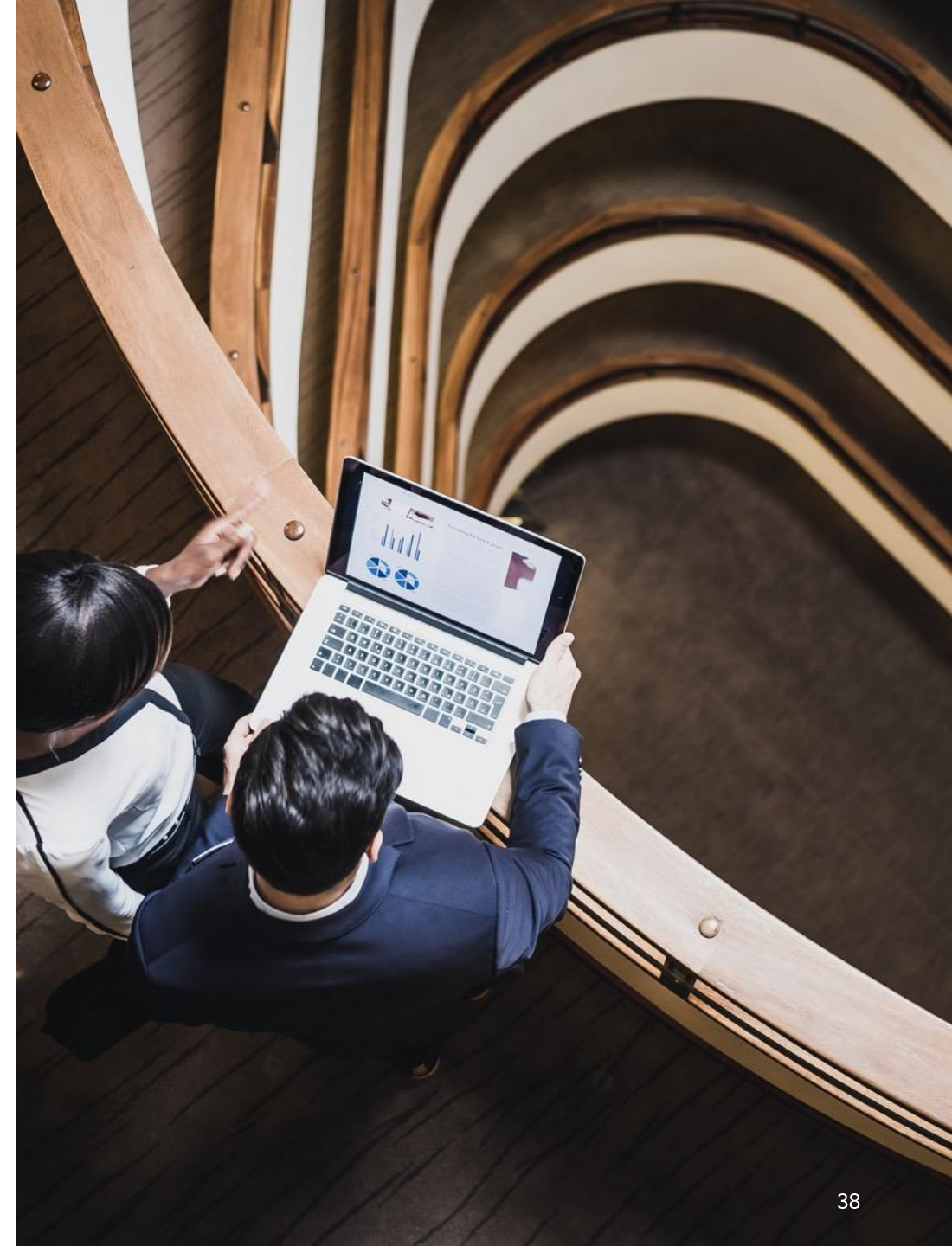
### SAP Business One core

- Enhancement of service layer API
- Web client extensibility (UI API, user-defined values, user-defined objects, user-defined tables)
- Webhooks support
- Side-by-side application support (SAP BTP enablement)

This is the current state of planning and may be changed by SAP at any time.

PUBLIC

This presentation and SAP's strategy and possible future developments are subject to change and may be changed by SAP at any time for any reason without notice. This document is provided without a warranty of any kind, either express or implied, including but not limited to the implied warranties of merchantability, fitness for a particular purpose, or noninfringement.





# Planned innovations:

## Identity and authentication management

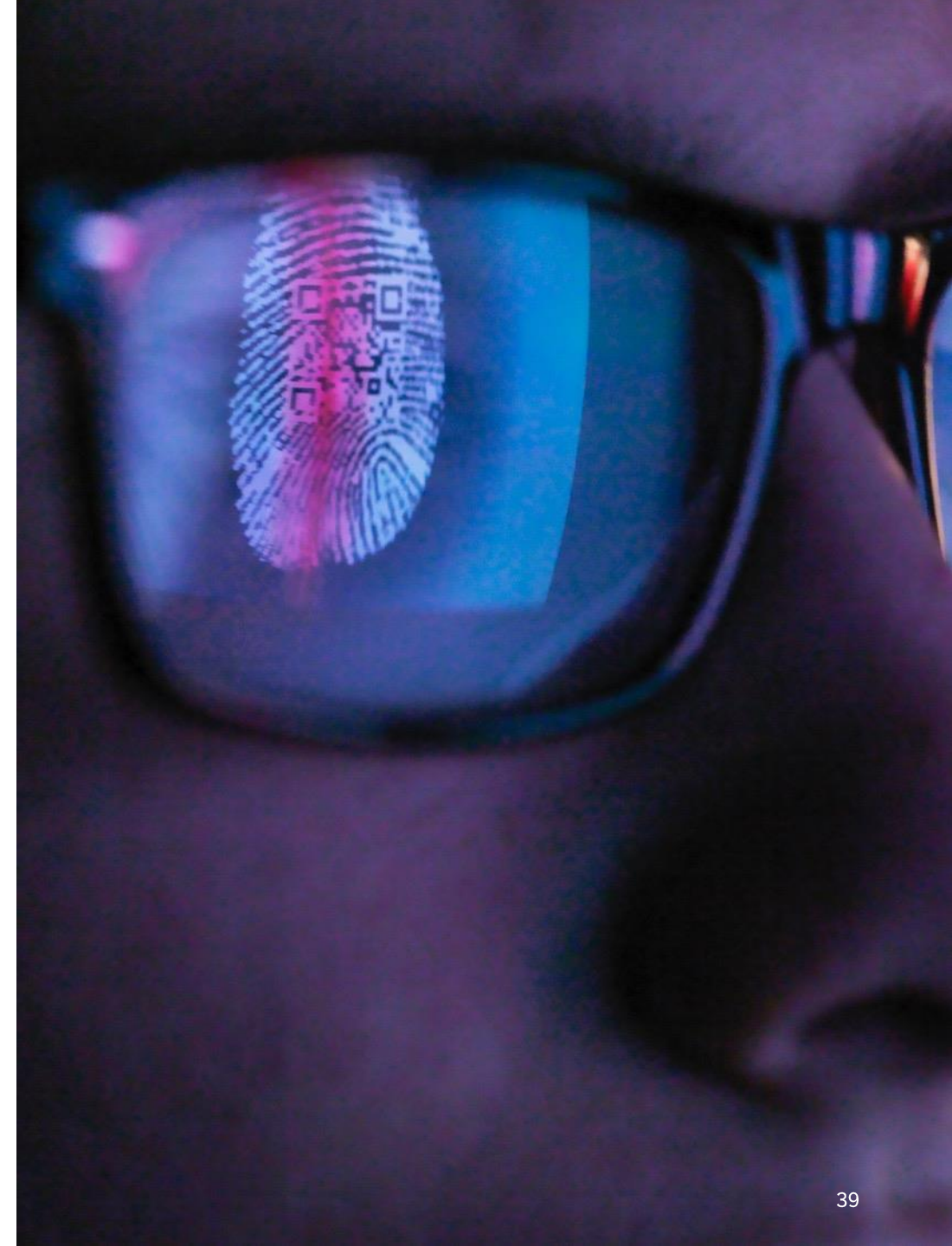
Single sign-on experience across SAP Business One components

### Feature

#### Identity and authentication management

- Create a standardized process for “user propagation” when integrating with Azure and Entra ID
- Set user as superuser during binding operation
- Remember IdP’s sign-in preference
- Provide a best practice for signing into Web client with SSO
- Introduce password policy management for SAP Business One authentication service in system landscape directory
- Introduce "Forgot My Password" option in SAP Business One desktop and Web client
- Edit option for existing IdPs in system landscape directory (SLD)
- Support unbind operation from multiple companies
- Enhance central user management in SLD (for example, expose license dimension, show user inactivity)
- Support multiple domain entries for (OIDC) IdP
- Support additional industry-leading IdPs

This is the current state of planning and may be changed by SAP at any time.



# Planned innovations: **Integration framework**

## An extremely strong platform

### Feature

#### Integration framework

- Identity and access management user authentication enhancements
- Role management introduction for integration framework
- Basic SAP S/4HANA Cloud Public Edition integration
- Security enhancements

This is the current state of planning and may be changed by SAP at any time.

PUBLIC

This presentation and SAP's strategy and possible future developments are subject to change and may be changed by SAP at any time for any reason without notice. This document is provided without a warranty of any kind, either express or implied, including but not limited to the implied warranties of merchantability, fitness for a particular purpose, or noninfringement.





# Planned innovations:

## Mobile apps for the enterprise

Support flexibility and efficient processes anywhere

### Feature

- Use native device capabilities of latest devices
- Evolve service layer into a platform for building innovative mobile solutions for verticals
- Optimize functionality by delivering enhancements and new features

This is the current state of planning and may be changed by SAP at any time.

PUBLIC

This presentation and SAP's strategy and possible future developments are subject to change and may be changed by SAP at any time for any reason without notice. This document is provided without a warranty of any kind, either express or implied, including but not limited to the implied warranties of merchantability, fitness for a particular purpose, or noninfringement.



# Planned innovations: Cloud

## Simpler consumption and best scaling

### Feature

#### SAP Business One Cloud, partner-hosted option

- Enhanced tools in SAP Business One Cloud 1.1 control center focusing on hosting partners, improvements for user experience, monitoring, stability, and performance
- Lifecycle management optimization
  - Hot fixes (In-place upgrade)
  - Software component version control (maintain version consistency across service unit components)
  - Service unit setup
  - Tenant management
  - Backup management (built-in backup management solution for SQL and SAP HANA)
  - License server optimizations (edit and replace license server in existing service unit, license allocation report)
  - IdP setup and consumption
  - Certificate renewal
- Optimized partner support user functionality
- Support for virtualization platforms and latest platform updates
- Security enhancements

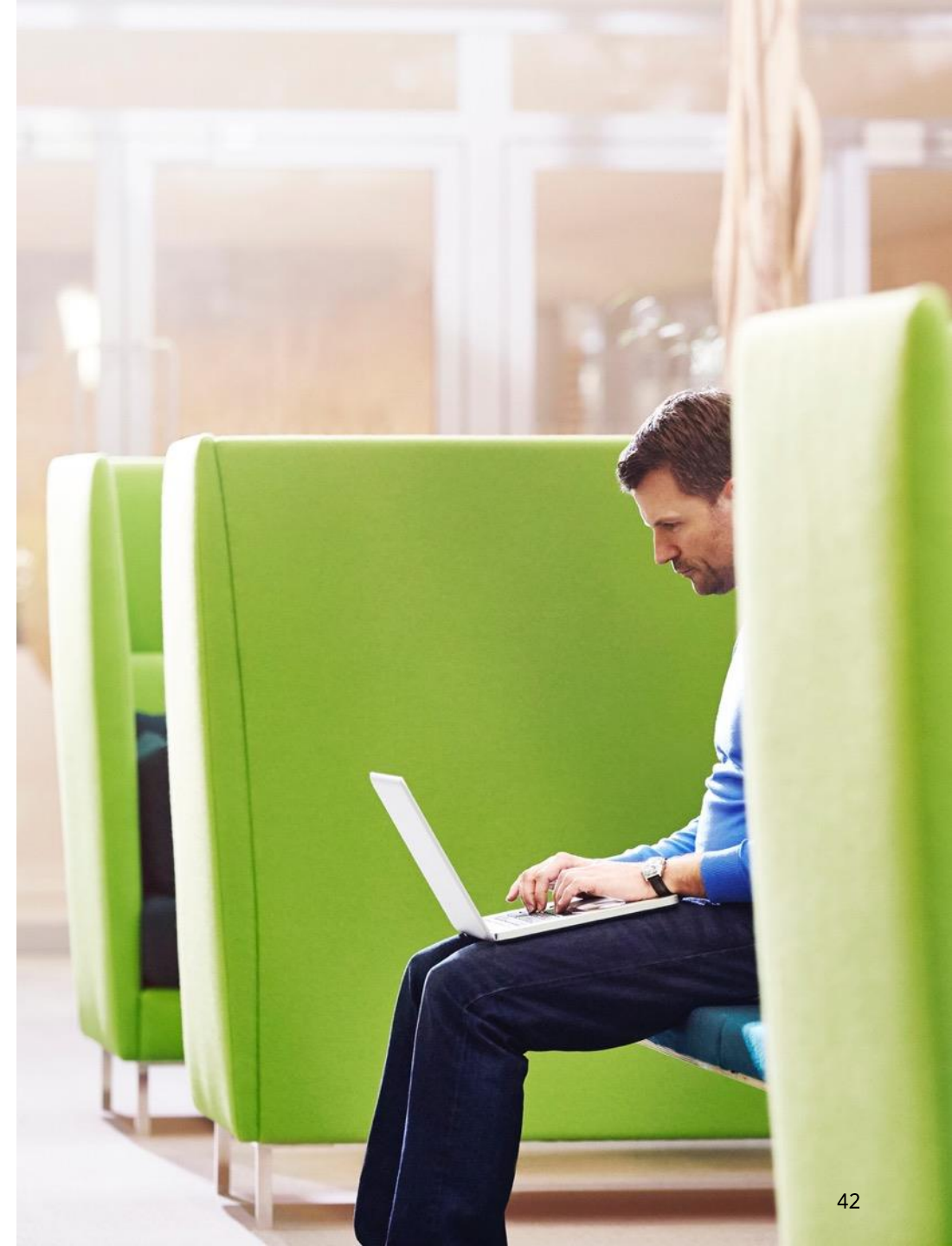
#### SAP Business One Cloud, SAP-hosted option

- Security enhancements

This is the current state of planning and may be changed by SAP at any time.

PUBLIC

This presentation and SAP's strategy and possible future developments are subject to change and may be changed by SAP at any time for any reason without notice. This document is provided without a warranty of any kind, either express or implied, including but not limited to the implied warranties of merchantability, fitness for a particular purpose, or noninfringement.





# Learn more about SAP Business One

PUBLIC

This presentation and SAP's strategy and possible future developments are subject to change and may be changed by SAP at any time for any reason without notice. This document is provided without a warranty of any kind, either express or implied, including but not limited to the implied warranties of merchantability, fitness for a particular purpose, or noninfringement.



# Learn more about SAP Business One

- [SAP.com](https://www.sap.com)
- [SAP Help Portal](#)
- [SAP Community for SAP Business One](#)
- [SAP Support Portal](#)
- [SAP Partner Portal](#)
- [Customer Influence session](#) (customers and partners only)
- [SAP Business One landing page on SAP Learning portal](#)
- [One pager: SAP Business One learning and enablement offerings](#)





# Thank you.

