

# SAP Business One road map

March 2026

# Legal disclaimer

The information in this presentation is confidential and proprietary to SAP and may not be disclosed without the permission of SAP. This presentation is not subject to your license agreement or any other service or subscription agreement with SAP. SAP has no obligation to pursue any course of business outlined in this document or any related presentation, or to develop or release any functionality mentioned therein. This document, or any related presentation, and SAP's strategy and possible future developments, products, and platforms, directions, and functionality are all subject to change and may be changed by SAP at any time for any reason without notice. The information in this document is not a commitment, promise, or legal obligation to deliver any material, code, or functionality. This document is provided without a warranty of any kind, either express or implied, including but not limited to the implied warranties of merchantability, fitness for a particular purpose, or noninfringement. This document is for informational purposes and may not be incorporated into a contract. SAP assumes no responsibility for errors or omissions in this document, except if such damages were caused by SAP's willful misconduct or gross negligence.

All forward-looking statements are subject to various risks and uncertainties that could cause actual results to differ materially from expectations. Readers are cautioned not to place undue reliance on these forward-looking statements, which speak only as of their dates, and they should not be relied upon in making purchasing decisions.

For all recent and planned innovations, potential data protection and privacy features include simplified deletion of personal data, reporting of personal data to an identified data subject, restricted access to personal data, masking of personal data, read access logging to special categories of personal data, change logging of personal data, and consent management mechanisms.

# About the SAP Business One road map

In the **road map for the SAP Business One solution** you can learn about SAP innovations along four different timelines:

1. [Recent innovations](#) for SAP Business One that have been launched in the past weeks or months and can already be purchased
2. [Product vision](#), providing a high-level and long-term business perspective on innovations for SAP Business One
3. [Product direction](#), providing a long-term perspective on high-level development plans for innovations—inspired by your requirements
4. [Planned innovations](#) for SAP Business One that are intended to be launched in the short term or midterm

# Table of contents

## Product overview

- SAP purpose and vision
- KPIs for SAP Business One
- Digital enablers
- Product description
- Recent innovations

## Product direction

- Product vision and areas of future investment
- Product road map overview
- Planned innovations



# Product overview



PUBLIC

This presentation and SAP's strategy and possible future developments are subject to change and may be changed by SAP at any time for any reason without notice. This document is provided without a warranty of any kind, either express or implied, including but not limited to the implied warranties of merchantability, fitness for a particular purpose, or noninfringement.

Our purpose

Help the world  
run better  
and improve  
people's lives



Our vision

**We bring  
out the best  
in every  
business**



**Transform** your business  
at scale with AI



**Achieve more**  
across the value chain



**Innovate sustainably**  
and with confidence

# SAP Business One: Flexible, integrated solution

Every day over 83,000 customers rely on SAP Business One to manage every aspect of their businesses and keep their customers satisfied.

SAP Business One offers an all-in-one solution for full business visibility and control, capturing crucial data for immediate decisions and actions across the company.

Built-in analytics and reporting make it possible to make fast decisions, with access to accurate and up-to-the-minute information.

Flexible for any business, it can be deployed on-premises or in the cloud, running on SAP HANA or Microsoft SQL servers. Employees can start using it quickly, and it can be customized and extended as your business grows.

For international expansion, SAP Business One supports 28 languages and 50 country-specific versions, with local support from over 850 partners.

## Why 83,000 customers already run SAP Business One around the world?

**Affordable low total cost** of ownership



**Quick and straight-forward** to implement



**Comprehensive** solution for your business needs both for today and tomorrow



**Powerful** to help your business grow



**Industry-tailored** solutions



**850+** local partners



International **expansion** ready



**28** languages



# SAP's best-selling ERP solution by number of customers



**83,000+**  
customers  
with **1.2+**  
million users



**500+**  
partner solutions  
delivered by  
~**300** partners



**50**  
country localizations  
and **28** languages per  
customer's choice



**7,000+**  
subsidiaries  
running the product for  
**360+** large enterprises



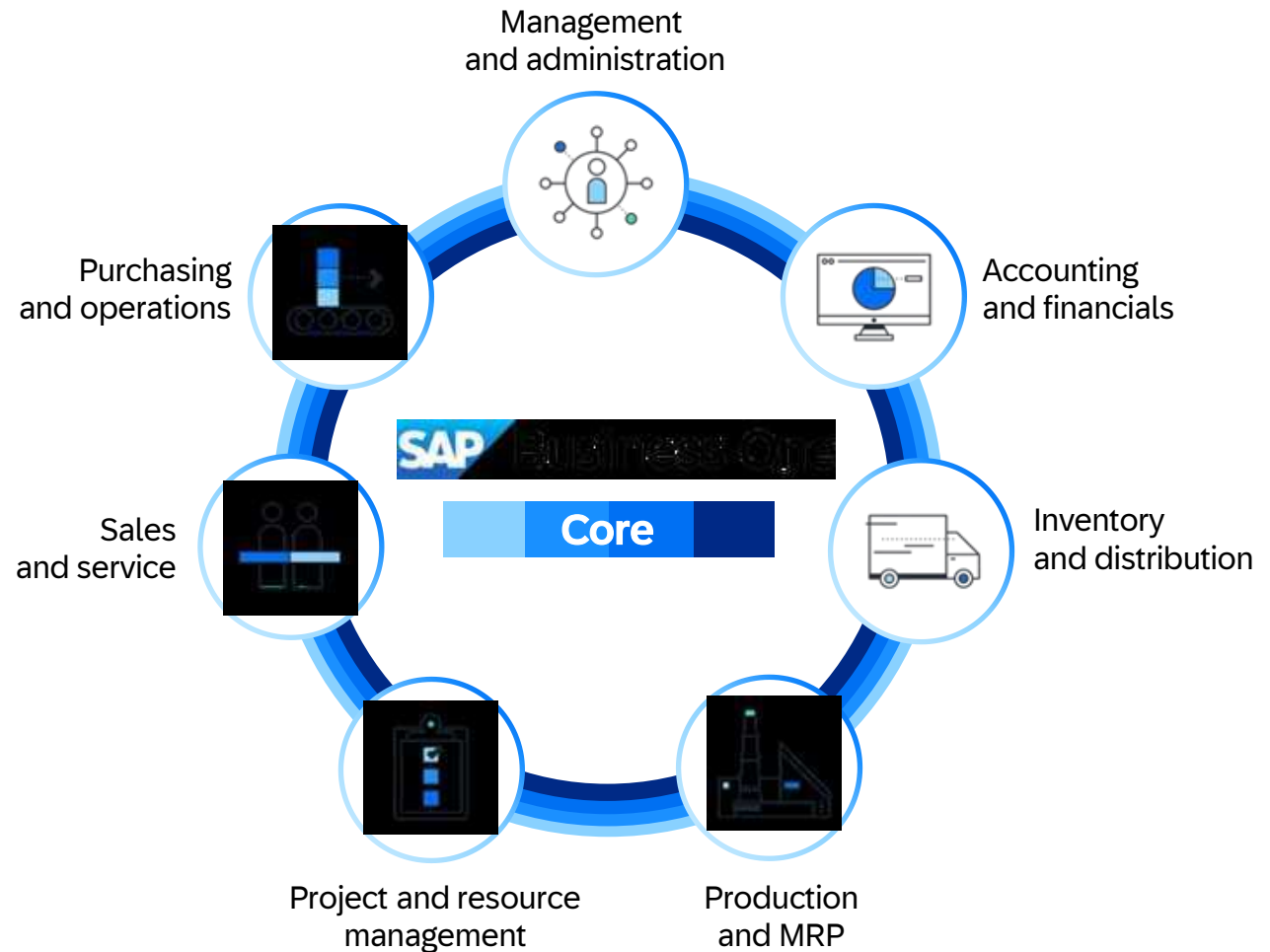
**850+**  
partners worldwide  
implementing and  
servicing customers



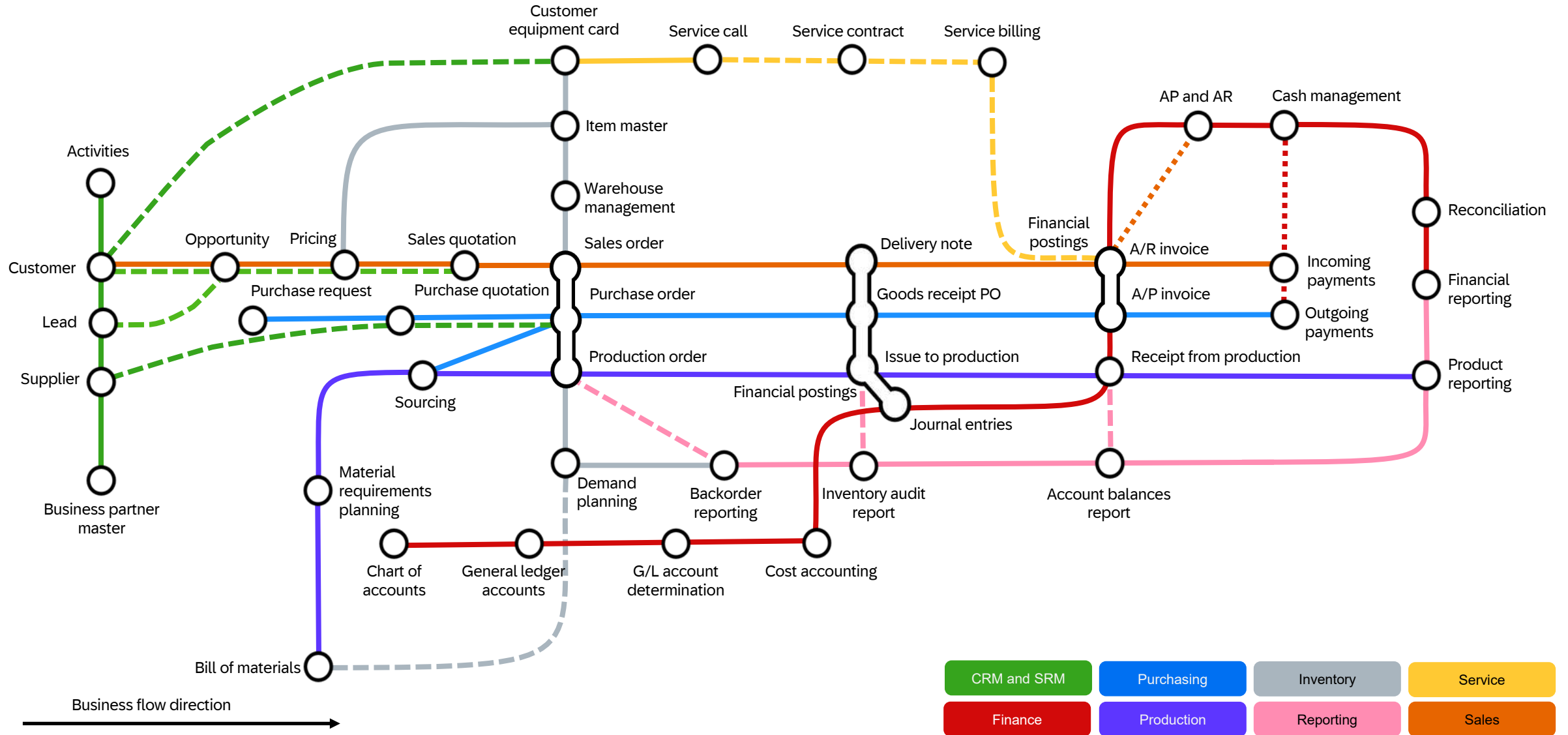
**170+**  
countries  
with customers and  
partners

# SAP Business One: Robust ERP solution

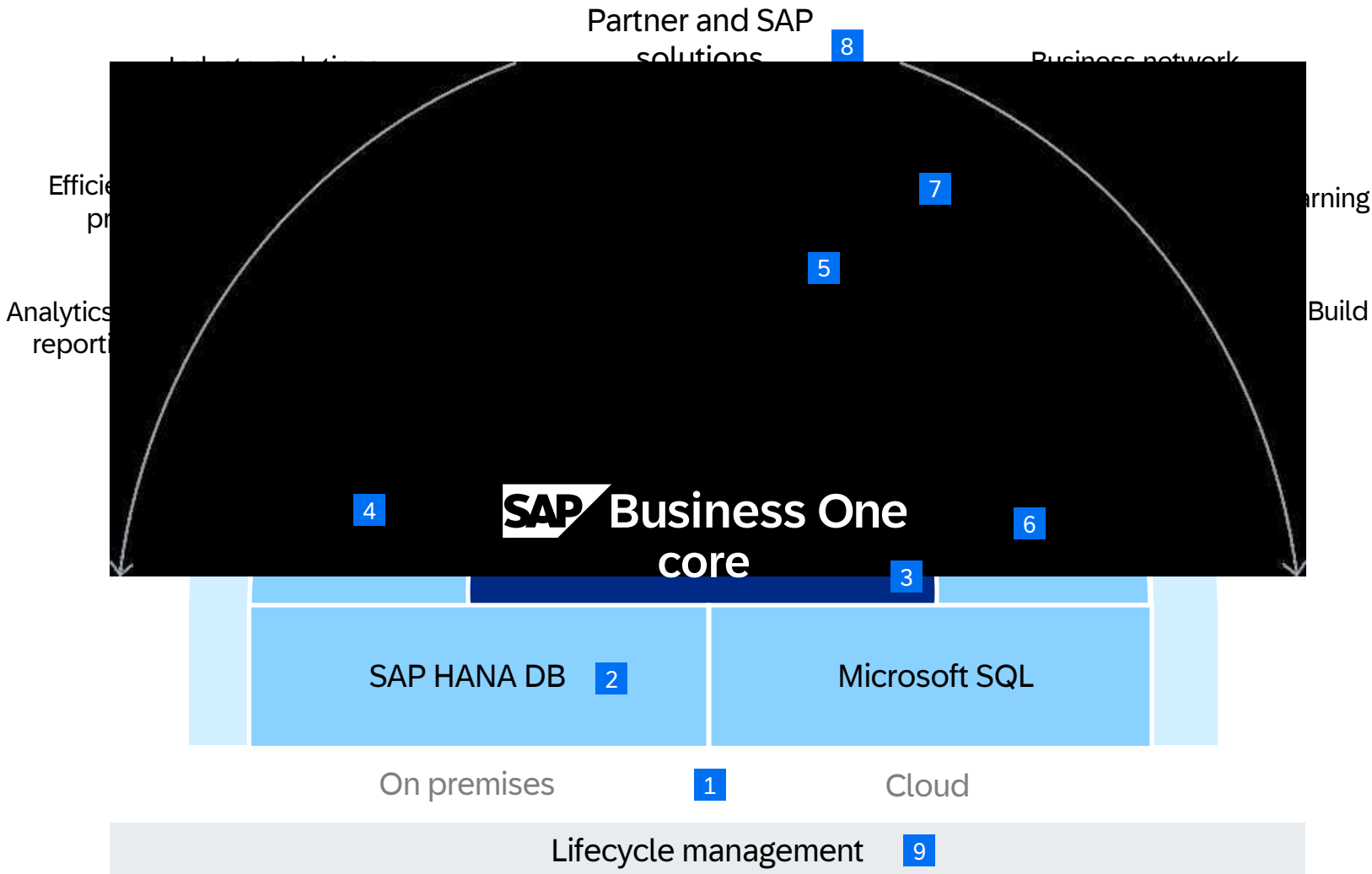
## Easier to extend and complement



# SAP Business One process metro map



# SAP Business One solution



## Cost

- 9 Low cost of ownership and efficient support + cloud control center

## Usability

- 7 Web client
- 7 Modern front end and analytics

## Comprehensive business scope

- 3 All standard business processes covered
- 8 Extending the solution scope based on extensibility layer
- 6 Robust integration and collaboration relying on service layer and software development kit (SDK)
- 4 Basic application programming interfaces (APIs)

## State-of-the-art technology

- 2 Running on in-memory technology
- 5 Interface for SAP HANA and Microsoft SQL applications
- 1 Full deployment flexibility

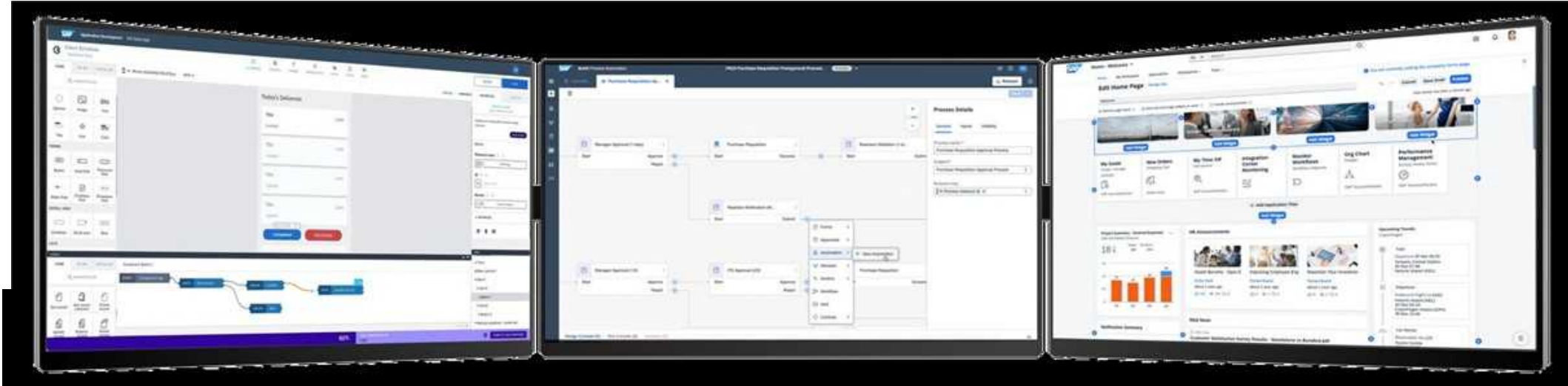
# SAP Build

Create enterprise apps, automate processes, design business sites with drag and drop simplicity

Compose apps

Automate processes

Design business sites



SAP Build Apps

SAP Build Process Automation

SAP Build Work Zone

Build visually  
Integrate smoothly  
Collaborate securely

SAP Business Technology Platform

**SAP Business Technology Platform** brings together application development, data and analytics, integration, and AI capabilities into one unified environment optimized for SAP applications.

# SAP Business One used in more than 170 countries

Master the challenge of globalization in your business

## Supported localizations (50)

Argentina	Finland	Mexico	Slovakia
Australia	France	Netherlands	South Africa
Austria	Germany	New Zealand	South Korea
Belgium	Greece	Norway	Spain
Brazil	Guatemala	Oman	Sweden
Canada	Hong Kong, China	Panama	Switzerland
Chile	Hungary	Poland	Turkey
China	India	Portugal	Ukraine
Costa Rica	Ireland	Puerto Rico	United Arab Emirates
Cyprus	Israel	Qatar	United Kingdom
Czech Republic	Italy	Russia	United States
Denmark	Japan	Saudi Arabia	
Egypt	Lebanon	Singapore	



## Countries making use of localizations

Customers in more than 120 countries use localization of other countries, own customization, or a partner solution.

## Supported system languages (28)\*

Arabic, Chinese (simplified and traditional), Czech, Danish, Dutch, English (UK and US), Finnish, French, German, Greek, Hebrew, Hungarian, Italian, Japanese, Korean, Norwegian, Polish, Portuguese (Brazil), Portuguese, Russian, Slovak, Spanish (Latin America), Spanish, Swedish, Turkish, and Ukrainian

\*A convenient option for making additional languages available is using a partner solution (for some countries bundled with functional add-ons) or to define customer-specific UI terms using the custom language tool as detailed in SAP Note [1757764](#).

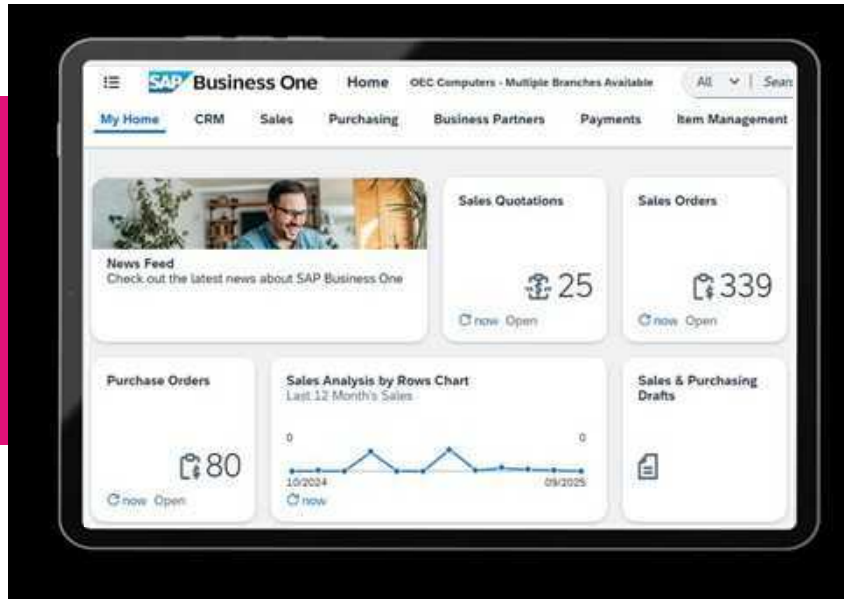
# Recent innovations

PUBLIC

This presentation and SAP's strategy and possible future developments are subject to change and may be changed by SAP at any time for any reason without notice. This document is provided without a warranty of any kind, either express or implied, including but not limited to the implied warranties of merchantability, fitness for a particular purpose, or noninfringement.



# SAP Business One, Web client: The best of all worlds



## Web client benefits

- Supports smooth working with SAP Business One using native web browser
- Offers the core business logic and processes in a new user experience based on the SAP Fiori design system
- Reads and writes from and to the same company database used with SAP Business One

## Business processes coverage

- Process map and company configuration
- Sales and purchasing documents, including document generation and procurement confirmation wizards
- CRM, service, and timesheet
- Basic finance
- Payments
- Items and business partners master data
- Inventory transactions
- Production and resources
- Document drafts and approval process
- Sophisticated analytics capabilities

## Integration and extensibility

- Microsoft 365 OneDrive export (Excel, Word)
- Email using Microsoft Outlook 365
- User-defined fields, tables, and objects
- Web client user interface API (UI API)
- User-defined values
- Support for SAP Crystal solution reports and layouts
- SAP Companion service (web assistant) adoption

# SAP Business One, Web client: Analytics

Powerful analytics at the tip of your fingers

## List view: Object-centered analytics

Use sophisticated filtering (including date offset) and visualization (including date aggregation) capabilities for deriving and presenting the data you need in every object list view

## General overview: Gather multiple data sources

Design cards based on any list view, analytical chart, user-defined object (UDO), user-defined table (UDT), or user-defined query (UDQ), showing the data you need from various aspects, including KPI setup

## User-defined queries

Manage, create, edit, and preview UDQs; presented as standard list view and can be leveraged as a data source for cards on general overview

## Linked views: Contextual analytics

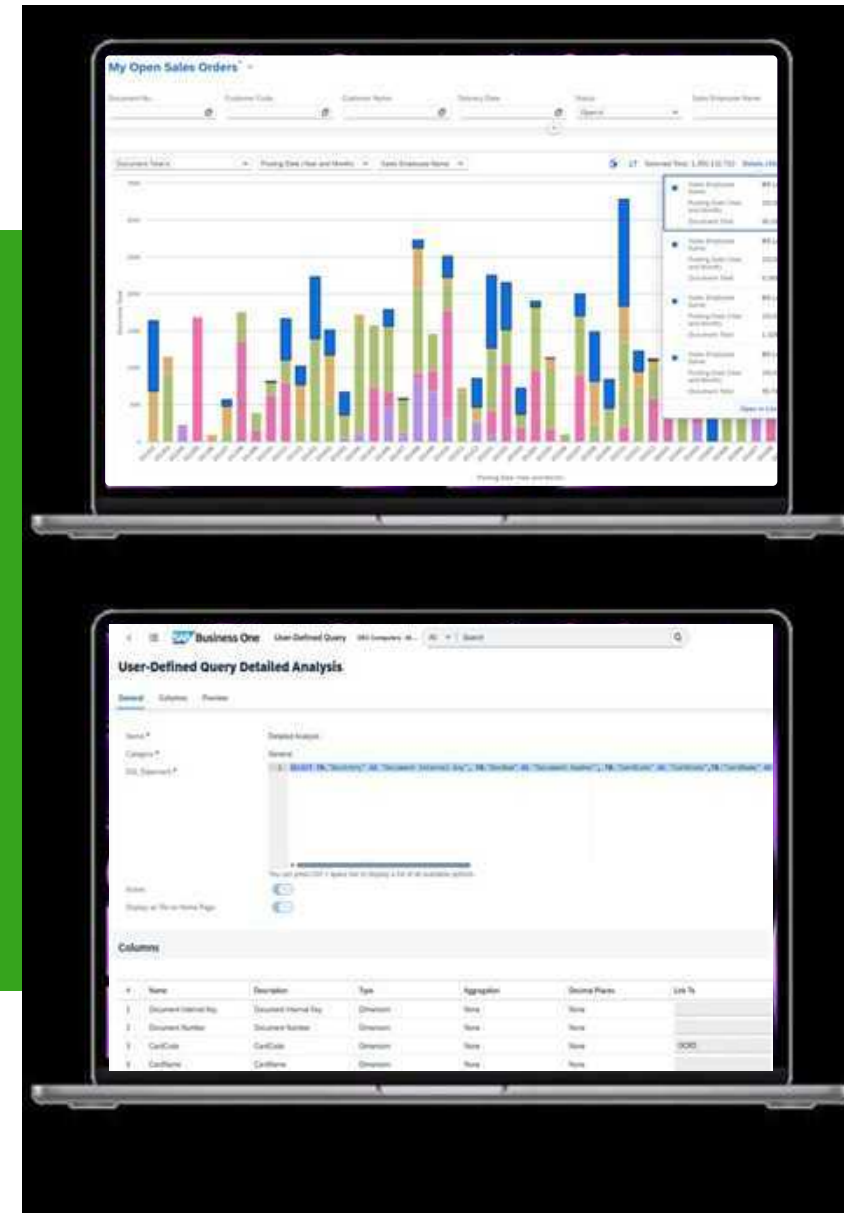
Assign any view, general overview, or UDQ to any object header and line level to derive record-specific data

## Export and import views: Collaborate across companies

Export selected views (and links) to a file that can be imported into other company databases

## Share by email: Collaborate among users

Embed a direct link to any view, general overview, or UDQ in email body and send to your colleagues



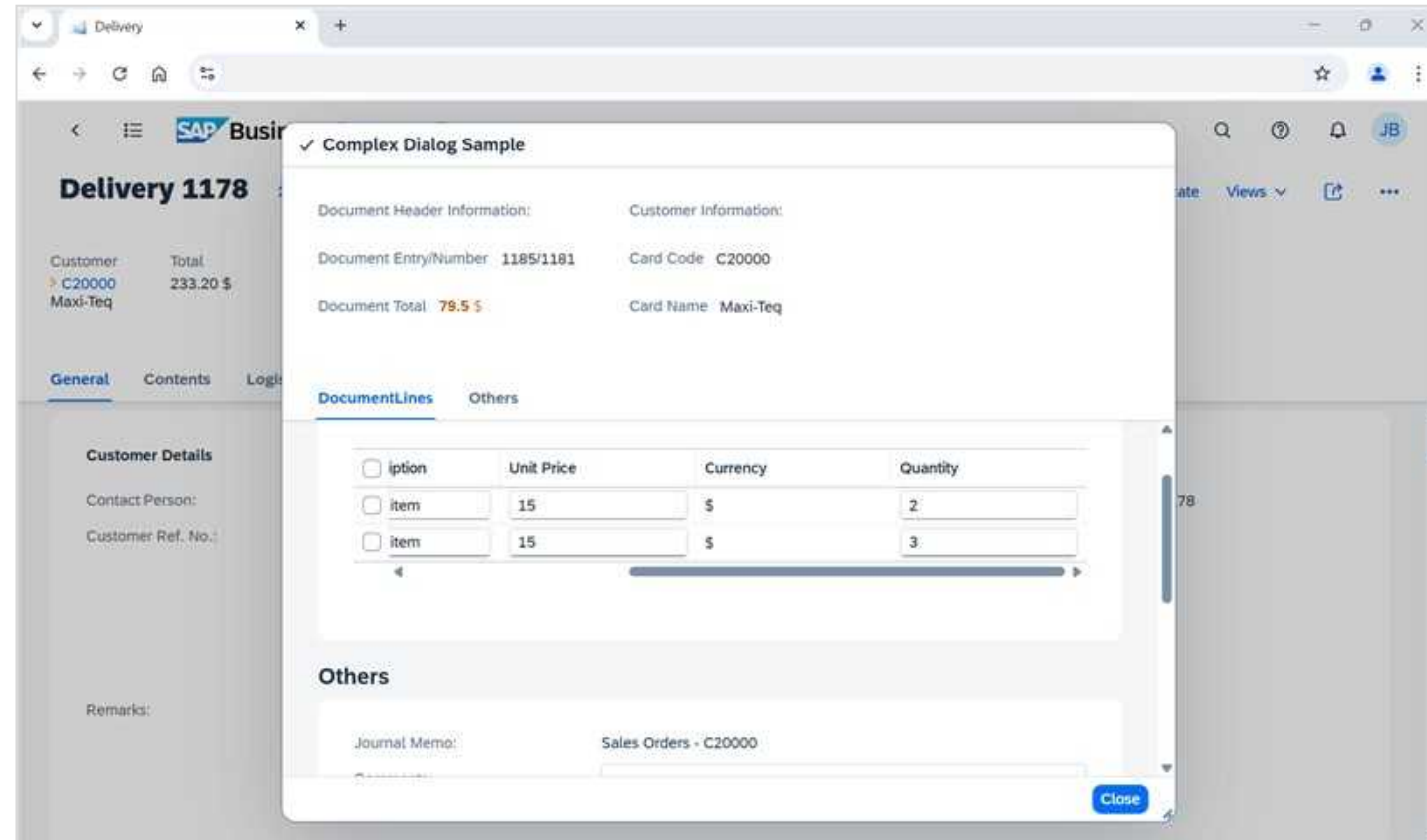
# SAP Business One, Web client: UI API framework

## UI API framework

- Ability to customize Web client views
- Support for UI controls: Complex Dialog, Choose from List, and more
- Support for events: ANCOR, Refresh API, and more
- Webhooks support
- Samples and online help

## Develop using VS Code IDE

- Creation of a project in VS Code
- Selecting the relevant views to extend
- Previewing the relevant changes
- Debugging
- Packaging and deployment using the extension manager
- Support for TypeScript
- Support for additional views, such as item master data and more



# Identity and authentication management



- SAP Business One supports the identity and authentication management service, allowing users to authenticate with their identity provider (IdP) user when signing in to SAP Business One in on-premises and cloud (using cloud control center) deployments.
- Two-factor authentication (2FA) can also be enabled for an extra layer of security, helping to protect user accounts against unauthorized access.

## Key enhancements in identity and authentication management up to feature pack 2602

- Superuser role assignment during binding and edit operations
- Superuser setting display for bounded company users
- Company multiselect during unbinding operation
- Support for proper display of companies with long name under “Choose Company” drop-down list
- New “Choose Company” modal window
- Ability to import IdP using CSV file
- User’s IdP sign-in credentials remembered for automatic sign-in to the SAP Business One client
- Ability to check Active Directory Domain Services user status
- Ability to bypass single sign-on (SSO) using registry key update

### On-premises



SAP Help



Blog



YouTube

### Cloud (cloud control center)



SAP Help



Blog



YouTube

# Lifecycle management

Keeping SAP Business One secure, up to date, and intuitive to run

Lifecycle management helps ensure your SAP Business One system stays secure, reliable, and intuitive to operate throughout its entire lifecycle. It spans:

- Deployment and installation
- Upgrade and maintenance
- Backup and recovery
- User and identity management
- Monitoring and compliance

## Key highlights up to feature pack 2602



### Architecture enhancements

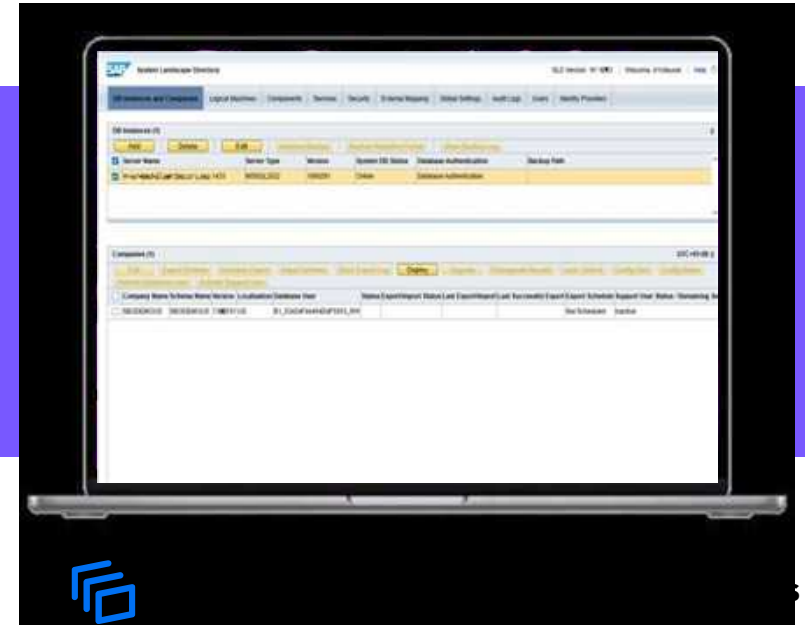
Introducing modular Tomcat deployments in server tools

- Dedicated Tomcat Instances: Key components such as license service, job service, and service layer controller now run on separate Tomcat instances, replacing the single shared Tomcat setup.
- Reduced dependencies: Services split to minimize cross-impacts, enabling independent restarts, smoother maintenance, and boosted overall stability and performance.



### System landscape directory (SLD)

- SAP Business One Microsoft 365 integration deployed as a stand-alone component, supporting external address mapping
- New webhook messenger component
- Certificate expiration date for registered components
- Comprehensive version tracking for registered components
- Support for user activation using SLD
- Define backup retention period for database instances (version for SAP HANA)



- SLES 15 SP7, HANA2 SPS08 87 (version for SAP HANA)
- Microsoft Windows Server 2025 (SQL)



### SAP Business One, Web client

- Session expiry alert for the support user in Web client
- New job monitor application



### License manager control center

- License consistency check and removal of inconsistent license allocations

# SAP Business One Cloud (cloud control center)

Centralized management tool for multi-tenant deployments of SAP Business One



Cloud control center (CCC) transforms multi-tenant SAP Business One management into a streamlined, centralized operation. Manage tenants, users, services, storage, and licensing from one secure platform while maintaining strict data isolation—enabling rapid growth without operational complexity.

## Key highlights up to CLD 1.1, PL 21



### System landscape directory (SLD)

- You can monitor certification expiration date for service unit components and get warnings in case of expiring or expired certificates.
- SLD agent version is now available in SLD agent table matrix. This helps keep SLD operations running smoothly by assuring all SLD agent are running on latest versions.
- You can now define a new restricted cloud operator: “Read-Only and Open PSU Connection.”
- High availability configuration file is updated for simpler setup.
- Enhanced logical machines functionality: includes
  - Removing discontinued logical machines.
  - Automatic cleanup of logical machine logs older than 6 months.



### Tenant management

- For SAP HANA service units, when upgrading or duplicating tenants, a new checkbox is available, allowing you to automatically initialize the upgraded or duplicated tenants in the analytics services server.
- In the global settings of the cloud control center, you can choose to enable the restriction of tenants upgrade only on staging service units.



### Authentication and identity management

- You can configure identity providers and user bindings from the SAP Business One cloud control center.



### Platform support matrix: Latest additions

- Microsoft SQL Server 2022 is supported.

# Artificial intelligence and automation

## Extensibility readiness for adoption of AI services

### Artificial intelligence: AI services and tools from SAP

- **SAP Document AI solution** and available integration to SAP Business One: SAP AI Service running on SAP BTP and leveraging machine learning to streamline processing of invoices from vendors
- **SAP Build Process Automation:** A solution helping customers maintain their edge and free employees from repetitive and error-prone tasks (seven automation best-practice templates available to be used with SAP Business One)
- **AI Foundation on SAP BTP:** A full set of services for AI developers to build robust AI-driven extensions and applications

### Artificial intelligence: Solutions from SAP partners

- SAP Business One extensibility is ready for adoption of AI services, enabling partners to create and innovate with AI services and most recent AI agents and develop own extensions and applications leveraging the latest generative AI technology.
- Partners are making use of SAP BTP tools for the solution development.
- Each customer has the freedom to choose the appropriate solution to meet that customer's needs.



# SAP Business One 10.0: Key highlights up to feature package (FP) 2602 (1/7)

## Web client

### Documents

- Finance: Chart of accounts, journal entries, journal vouchers, recurring journal entries, and journal entry templates
- Sales: Quotations, orders, deliveries, returns, return requests, A/R invoices, A/R reserve invoices, A/R credit memos, A/R down payment invoices, A/R correction invoices, blanket agreements, recurring transactions, ATP, and document generation wizard
- Purchasing: Purchase requests, quotations, orders, goods receipt POs, goods returns, goods return requests, A/P invoices, A/P reserve invoices, A/P credit memos, A/P down payment invoices, A/P correction invoice, landed costs, and purchase procurement wizard
- Payment and banking: Incoming and outgoing payments, deposits,
- Inventory: Goods issues, goods receipts, inventory counting, inventory posting, inventory opening balances, and inventory transfer
- Production documents: Production orders and resources

### Functionality

- Process map
- Company configuration framework
- Outgoing and incoming serial and batch numbers (SnB) and bin location selection
- Service calls and solution knowledge base
- Relationship map
- Document opening and closing remarks
- Approval process and drafts incl. approvers
- Business partner (BP), item master data
- BP catalog number and bar code
- Multiple branches
- Freight charges
- Exchange rate entry and exchange rate table
- Authorizations and data ownership
- Opportunities and activities
- Bill of materials (BOM)
- Equipment card and service contract
- Alternative items
- Timesheet
- Packing slip
- Support for DATEV export (Germany only)

### Usability enhancements

- Customizable home page
- Flexible list views
- Special lines in marketing documents
- Reference documents
- Predefined texts
- 28 display languages
- Multilanguage support
- Message preferences
- High-contrast UI theme and Horizon theme
- Attachment management
- Multiple notification types
- SAP Companion adoption
- KPIs display in user-defined tiles

# SAP Business One 10.0: Key highlights up to FP 2602 (2/7)

## Web client

### Analytics and reporting enhancements

- Advanced analytics content and editor incl. import and export views
- User-defined queries
- Linked list views
- KPI setup
- Reporting content: Sales analysis
- Reporting content: Profit and loss report for Germany, United Kingdom, and United States
- SAP Business One deployment of SAP Crystal Reports offerings
- Printing support

### Technological enhancements

- Enterprise search: Supported on SAP HANA
- Support for single sign-on

### Integration enhancements

- Microsoft 365 integration to OneDrive (Excel, Word)
- Outlook 365 integration
- Business-card scanning with SAP Document AI solution Import from Excel (items, business partners)

### Extensibility enhancements

- Support for APIs for new views
- Support for “Display in menu” setting for UDTs
- User-defined fields, tables, and objects
- User-defined values: Arithmetic and logical formula
- User-defined values central management
- VS Code plug-ins (URL mashup, apps), iFrame as a tile support
- Web UI APIs: Controls , new events.
- Web UI APIs: Authenticate
- Complex dialog in VS Code wizard
- Webhooks support

# SAP Business One 10.0: Key highlights up to FP 2602 (3/7)

## Localizations | Legal compliance

### Accounting

- Journal entries series for the period-end closing/exchange rate difference and conversion differences transactions

### Banking

- Bank statement processing (BSP) enhancements

### Electronic invoicing

- EU Peppol electronic invoicing support
- XRechnung e-invoices for Germany
- Electronic Invoice for Israel
- Digital signature support for Israel
- Electronic invoice/KSeF for Poland
- E-billing integration with ClearTax for India
- Online invoicing enhancements for Hungary
- Electronic signing for electronic invoices for Portugal
- E-delivery support for Greece
- Embed PDF support in the electronic document import Wizard
- Veri\*factu communication for Spain
- Electronic Invoice enhancement for Italy
- CAEA introduction in Argentina

### Tax management

- Support for external VAT calculation for all localizations except Israel
- VAT API for Denmark
- Tax setup APIs for Brazil
- Golden Tax interface update for China
- Multiple e-TDS in the A/P invoice for India

### Tax reporting

- Electronic VAT report export support
- Withholding tax and DIOT reports enhancements for Mexico
- Certificazione Unica enhancements for Italy
- Transmitting GST return for Singapore
- SAF-T tax report for Norway
- SAF-T report for Portugal
- E-books incl. online sales reporting with duty and expense classification enhancements for Greece
- MOVEIN.DAT file enhancement for Israel
- Adoption of the new ELSTER ERiC versions for Germany

### Inventory management and tracking

- Cargo tracking and tracing enhancements for the EU

### Audit files

- Audit trail report
- Audit file (FEC) enhancements for France
- SAF-T report for Denmark (mandatory information)

### Printing

- SAP Crystal Reports software layouts for Switzerland

### Other

- Folio enhancements for Chile
- Operating profit and net income for Brazil
- A/P down payment request to support e-TDS for India
- Qualified invoice method for Japan
- 1099 forms enhancements for the United States
- Auto-renumbering for AFE authority for Argentina
- A/R, A/P invoice item invoice with no stock movement
- ISD documents enablement in DI API/SL for India
- Unencumbered tax enhancement in the marketing documents for Brazil

# SAP Business One 10.0: Key highlights up to FP 2602 (4/7)

## Inventory | Distribution | Production

- Serial and batch numbers mgmt. enhancements
- Ability to change unit of measure (UoM) group of an item
- Additional authorization groups for price lists
- Item group name extended to 100 characters
- Support for setting UoM group as inactive
- Reverse and forward serial and batch no. trace report
- FIFO layers report by consumption order
- Drill-down from BOM to item master data
- Inventory counting enhancements
- Extending field length of item description and industry
- Modifying remarks and unified demand forecasts (UDFs) in closed production orders and pick lists
- Support for mass deletion of BOM
- Procurement confirmation wizard based on production orders
- Changing status of sales and purchase type in item master data
- Opening last prices report from item master data
- Displaying preferred vendor name in item master data
- Support for attachments for bill of materials
- Production order variance report extension

## Financial management

- Drill-down to G/L accounts in financial reports
- Posting periods enhancements
- Journal entry remarks extended to 254 characters
- System messages before adding journal entries
- Extended journal entry references
- Updated journal entries with locked posting periods
- Enhanced printing preferences for payments and deposits
- Report refresh enablement
- Management of change log for exchange rates
- IFRS postings for fixed assets
- Tax code determination enhancements in procurement process
- Payment terms enhancements

# SAP Business One 10.0: Key highlights up to FP 2602 (5/7)

## Sales | Purchasing | Service

- Allowing update due date in partially reconciled invoices
- “Add and view” and “Add and close” in A/R and A/P docs
- Printing service calls and contacts
- Hiding blank lines in addresses
- Proc. confirmation wizard support for gross and net modes
- Enabling updating UDFs in closed documents
- Setting problem types, call status, and more as “Active”
- Flexible default “Valid until” date in sales quotation
- Linking single equipment card to multiple BPs
- New document status “Open emailed”
- Storing price list no. and name in marketing documents rows
- A/R invoice rows with no quantity postings
- Extended business partner effective price sources
- Ability to hide document remarks
- Copying attachment paths to target documents
- Cancellations of return requests
- Updating consolidating business partner and consolidation type at document level
- Customer and vendor reference number enhancement
- Document information extraction integration enhancement incl. service-type document support
- Display of sales document in procurement wizard if target document is canceled
- Relationship map support for reference documents and opportunity
- Moving rows up and down in marketing documents
- Discount support in down payments

## CRM

- Customer and vendor group name extended to 100 characters
- Viewing and updating address UDFs in docs, service calls, and address format setup
- Support for filtering activity reports by UDFs
- Activity type “Email”
- Link between contact person and BP address
- Hiding inactive contact persons in BP master data
- Configuring display of employee name
- Telephone field extended to 50 characters
- Foreign name field extended to 200 characters

## Project management

- Interactive Gantt chart
- Sorting order for project stages

# SAP Business One 10.0: Key highlights up to FP 2602 (6/7)

## Administration

- Support for attachments tab in additional objects
- Deleting live collaboration history by date range
- Enhancements in approval process
- Setting warning for single-user validation
- Deactivation of shipping types
- Hiding locked users
- Enhanced user removal management
- Open users—set up form in “Find” mode
- Messages and alerts cleanup tool
- Manual determination of path in general settings
- Adding detailed errors for license imports
- Enhancing license balloon appearance
- Main menu form settings for indirect access users
- Sort forms in user interface configuration template
- Support for "Hide BOM in component" in SAP Crystal Reports layouts
- Enhanced copy of single form settings
- Allowing change log to read-only documents
- Enabling retrieval of a default value of an SAP Crystal Reports parameter
- BP payment terms without price lists
- Change log enhancements for employee master data
- Managing change log for system setup entries
- Providing parameters for dunning letters in SAP Crystal Reports layouts
- Support for dynamic names for electronic files (bank files and Intrastat)

## Authorization enhancements

- Tab-level authorizations in business partner and item master data
- Support for “Find next” function in authorizations form
- Change log entries for authorization user groups
- Authorization to use “Copy table”
- Authorizations for duplicate documents and records
- Authorizations in payments draft report
- Adding authorization to “Remove opportunity”
- Increased number of authorization groups
- New authorizations for timesheet
- Authorization change log

# SAP Business One 10.0: Key highlights up to FP 2602 (7/7)

## Platform | Extensibility

- **SAP HANA 2.0 adoption**
- **Service layer configuration UI**
- Service layer support for Microsoft SQL database server
- Service layer support for views on Microsoft SQL
- User-defined values supporting multiple triggers
- UDO and UDT management through Web client
- Extending UDF support to additional objects
- Microsoft 365 integration
- Increasing menu item limit to 2,000
- Extend DI API and service layer coverage
- API access for CR reports
- Integration hub
- Security enhancements
- Support for Microsoft SQL 2022
- Electronic file management enhancement

- Extending service layer coverage
- Linking UDFs to system forms and user-defined objects
- Enabling DI access to system permissions
- Support for Visual Studio 2019 with SAP Business One studio
- Enhancing UI API error handling
- Support for queries through service layer
- Adding queries to menus
- Sizing guide for service layer
- Unification of installation and upgrade packages for SAP Business One
- Query manager enhancements
- Support for SAP Crystal Reports 2020 SP2
- Checkbox type for user-defined field
- UI API VS Code IDE:
  - Support for TypeScript
  - Support for additional views, such as Item master data
- New UI API controls:
  - Dialog view, date and time picker, and more

**Bold = SAP HANA**

## Usability

- **New skin style in SAP HANA and Microsoft SQL**
- Enhanced user interface
- User name in license and add-on administration
- **Support for 4K monitors**
- Revised SAP Fiori UI for SAP Business One Service and SAP Business One Sales mobile apps

# Product direction

PUBLIC

This presentation and SAP's strategy and possible future developments are subject to change and may be changed by SAP at any time for any reason without notice. This document is provided without a warranty of any kind, either express or implied, including but not limited to the implied warranties of merchantability, fitness for a particular purpose, or noninfringement.



**“SAP Business One is of strategic importance within the SAP solution portfolio.**

**SAP continues to invest in the future of SAP Business One. Our partner ecosystem remains at the heart of this success—driving autonomy, resilience, and growth, and winning new customers every day.”**

**Karl Fahrbach**, SAP Chief Partner Officer

December 2025 ([SAP News: 10 New Customers a Day: The Global Success of SAP Business One](#))

# Product areas of future investment



**Product vision:** SAP Business One is SAP's leading ERP solution for small businesses and the lower midmarket, offering flexible deployment options including multi-tenant environment provisioned by SAP partners. It provides a globalized and robust business core while enabling cloud extensions through SAP Business Technology Platform and SAP Build solutions, all with a modern and intuitive user experience.

## Core ERP engine

- Offering a highly competitive solution with **intuitive and modern Web client interface**
- Data and system security at the first place
- Improving the product continuously reflecting key customer and partner feedback
- Localization enhancements and addressing legal requirements
- Regular maintenance within efficient model

## Partner co-innovations and extensions

- Further enablement for partner innovations through **SAP Build** and **SAP Business Technology Platform**
- Partners to leverage the latest artificial intelligence technology from **SAP AI Services** to increase value for customers
- Improving robust developer experience on the Web client through the service layer, including new design concepts, APIs, objects, and tools

## Flexible deployment model with cloud focus

- Giving freedom to choose to deploy SAP Business One on premises (single-tenant) or scale to a multi-tenant environment provisioned by SAP partners
- Supporting partners in customer's cloud transformation by extending cloud tools managed by partners

## Helping ensure competitiveness

- Enabling fast adoption of intuitive Web client design for new customers and growth opportunities
- Supporting the transformation of the latest innovations into customer value at lower TCO

# SAP Business One releases and related products

## Long-term product road map with continuous innovation

### Core and related products

### Releases



#### SAP Business One

(version for SAP HANA and MS SQL)

- Continuous enhancements through version 10 feature packages (FP) and support packages (SP)—SP 2605, FP 2608, SP 2611, FP 2702, SP 2705, FP 2708, SP 2711 . . .
- Feature packages containing any type of change including innovation (such as Web client, integration, SAP BTP enablement, lifecycle management, Customer Influence program feedback, and more)
- Version 11 to follow version 10 in 2027



#### Web client

- Enhancements for working smoothly with SAP Business One using native web browser—accelerated delivery planned for 2026 and 2027



#### Cloud

- Continuous enhancements for SAP Business One Cloud 1.1 (cloud control center) through update patches (PL22, PL23 . . .)



#### Mobile apps

- Continuous enhancements for all mobile apps through apps updates

The latest SAP Business One release planning details are always available in SAP Note [2267770](#).

This is the current state of planning and may be changed by SAP at any time.

PUBLIC

This presentation and SAP's strategy and possible future developments are subject to change and may be changed by SAP at any time for any reason without notice. This document is provided without a warranty of any kind, either express or implied, including but not limited to the implied warranties of merchantability, fitness for a particular purpose, or noninfringement.



# SAP Business One, version 11

Introduction of a new generation of cloud management tools for SAP partners



## Multi-tenant cloud provisioned by SAP partners

- **Unification of system landscape directory (SLD)**
  - Single SLD managing single-tenant and multi-tenant deployments, supporting multiple v11.0 releases under one interface

## Cloud-native integration

- **Deployment on leading hyperscaler platforms**
- **Enablement of native cloud storage integration**
  - Smooth connectivity to SharePoint, Google Drive, OneDrive, and other cloud storage platforms

## Lifecycle management

- **Optimized deployment and upgrades**
  - Simplified installation and update processes
  - Introducing automation and component in-place upgrades
  - Exploring the potential use of containerization technology to enhance deployment flexibility and scalability
- **Connected SLD**
  - Connection with SAP back end for smooth lifecycle management operations
- **Enhanced identity and authentication**
  - Strengthening SSO, multifactor authentication, and modern authentication methods

## Functionality and support

- Continual Web client enhancements
- Continual support for desktop client
- Continual support for MS SQL and SAP HANA
- Item variants
- BOM versioning

## Artificial intelligence

- Product extensibility and integration enhancements for AI adoption by SAP partners

## First release to come in 2027

- Further enhancements through feature packages based on partner and customer feedback
- Limited time of overlay with version 10 deliveries

This is the current state of planning and may be changed by SAP at any time.

# SAP Business One

## Product road map overview: Key themes and capabilities

### Recent innovations

#### Core

- Web client sales, purchasing, service, inventory, and analytics functionality
- Continuous innovations based on market feedback (Customer Influence program)
- Enabling workflow integration based on SAP Build Process Automation bots
- Enabling document templates with SAP Build Process Automation

#### Globalization

- EU Peppol: Utilization of the SAP Document and Reporting Compliance solution Peppol exchange service cloud edition
- China: Golden Tax enhancements
- Germany: ZUGFeRD invoice import support in electronic document import wizard
- Israel: Donation model support
- Greece: Support for e-delivery
- Hungary: Deferred VAT support for down-payment invoice
- Spain: Software certification support
- Brazil: unencumbered tax support enhancement
- Embedded PDF creation
- Mexico: DIOT report enhancement
- Argentina: CAEA (Authorization Code in Advance)
- India: ISD documents availability in DI API and service layer
- Poland: Electronic invoice (KSeF) enhancement

#### Extensibility and platform

- Updated platform support matrix: SAP HANA 2.0 SPS08 87 | SUSE SLES 15 SP7 | Win 2025
- Enhanced service layer API including support for Microsoft SQL
- Microsoft 365 Integration: migrate from job service to a stand-alone component
- Identity and authentication management (IAM): Principal propagation (SAP BTP, Azure)

#### Cloud

- Introduce IAM in SAP Business One cloud control center
- Lifecycle management enhancements (tenant management, certificate management, and various operational optimizations across cloud control center)

### Planned innovations

#### Core

- Web client extended sales, purchasing, payments, service, financials, production, inventory, analytics, and administration functionality
- A/P invoice creation automation using Document Information Extraction service in the Web client
- Continuous innovations based on market feedback (Customer Influence)
- Microsoft Outlook 365 integration enhancements

#### Globalization

- Change log report enhancements
- Germany: Adoption of new ERiC versions for ELSTER
- France: Support for electronic invoice receiving 2026
- Germany: Audit File
- Germany: ZM/ELMA file format enhancement
- Poland: JPK reports update
- Header freight support in down payments
- Israel: Donation model enhancement

#### Extensibility and platform

- Enhanced service layer API
- Web client extensibility: UI API and VS Code IDE
- Webhooks support
- Identity and authentication management enhancements
- Support Microsoft SQL 2025

#### Cloud

- Certificate renewal (using Reconfig)
- License assignment consistency check
- Enhanced version handling

### Product direction

#### Core

- Extended Web client business process coverage
- Continuous innovations based on market feedback (Customer Influence)
- Optimized scalability and performance
- Simplification of landscape and deployment, support for containerization approach

#### Globalization

- Enhancement of existing markets and regions
- Integrations to electronic fiscal services
- IFRS compliance

#### Analytics

- Insight to action (data mining)
- Predictive, pervasive, and scalable
- Built-in content

#### Mobile

- Continuous innovations based on market feedback

#### Extensibility and platform

- Enhanced service layer API
- Enhanced Web client extensibility
- Event service support
- Support for virtualization platforms
- Upgrade simplification (support for component upgrade)

#### Cloud

- Upgrade simplification (component upgrade plus “in-place” upgrade for service unit)
- Backup management (SQL and SAP HANA)
- License server optimizations (such as changing license server in existing service unit)
- Expose service unit component service URLs to resellers
- Enhanced certificate lifecycle management (modern solution for handling short-lived certificates)

This is the current state of planning and may be changed by SAP at any time without notice.

# SAP Business One

## What's coming next: Outlook on core solution delivery for the next releases (SP 2605, FP 2608)

### Business processes and legal compliance

---

- High-value improvement requests (Customer Influence)
- Change log report enhancements
- Creating SAP Crystal Reports print layouts with attached XML
- Electronic file manager enhancement
- Electronic invoice enhancements for Argentina
- Document printing enhancement for Argentina
- Electronic documents enhancements for Israel
- Electronic invoice for France
- Central deposit support for multiple branch companies
- Down payments enhancement
- Electronic invoicing KSeF enhancements for Poland
- Electronic reports enhancements for Poland
- Electronic A/P documents support for Israel
- euBP audit file for Germany
- SAF-T report encryption and communication for Portugal

### Lifecycle management and cloud

---

- Enhanced security and compliance
- Expanded service layer coverage
- Certificate management optimization (readiness for short-lived TLS certificates)
- Identity and authentication management optimizations
- Register EFM as a stand-alone component
- License server enhancements
- Optimized upgrade process
- Support for latest platform updates (for example, Microsoft SQL 2025)
- Job service introduced for back-end processing of newly introduced wizards in Web client

This is the current state of planning and may be changed by SAP at any time.

# SAP Business One

## What's coming next: Outlook on Web client delivery for the next release (FP 2608)

### Business processes

---

#### Extended usability support

- Enhanced UI patterns: Process map

#### Extended business scope coverage

- HR: Employee
- Finance: Internal reconciliation and period end closing
- Marketing documents: Pricing, purchase quotation and dunning wizards
- Project management
- Payments and banking: Payment wizard, bank reconciliation, and outgoing checks
- Inventory and production: Pick and pack, inventory revaluation, and MRP

#### Extended localization coverage

- Tax setup coverage for Germany, United Kingdom, and United States

#### Analytics and reporting

- UDQ parameter support
- SAP's generative AI hub integration and enablement incl. selected use cases within user-defined queries (UDQ) generation and context linked queries
- Report content: General ledger, inventory movement, and purchase analysis report

### Extensibility and Integration

---

#### Web client user interface API (UI API)

- Webhooks extended support
- Extended Web client UI API control support
- Extended Web client UI API views support
- Extended VS Code IDE plugin support

#### User-defined value (UDV)

- Extend object support coverage
- UDV enhancements

#### Microsoft 365 integration

- Enhanced mail support
- Enhanced attachments support

This is the current state of planning and may be changed by SAP at any time.

# Planned innovations: **Core**

## Global, highly scalable real-time ERP

### Feature

Optimize core business processes and continuously deliver enhancements and new features, based on [Customer Influence](#)

- Optimize functions in logistics and inventory
- Optimize functions in CRM and service
- Optimize functions in financial
- Enhance usability
- Enhance data protection and privacy
- Integrate SAP solutions adding value for SAP Business One customers
- Enhance support for Microsoft Outlook for Windows

### Lifecycle management

- Streamline upgrade and installation processes
- Enhance core stability and system robustness
- Improve identity and authentication management
- Boost job service performance and monitoring
- Optimize data import capabilities
- Help ensure compatibility with latest platform updates

This is the current state of planning and may be changed by SAP at any time.

PUBLIC

This presentation and SAP's strategy and possible future developments are subject to change and may be changed by SAP at any time for any reason without notice. This document is provided without a warranty of any kind, either express or implied, including but not limited to the implied warranties of merchantability, fitness for a particular purpose, or noninfringement.



# Planned innovations: **Web client**

Extend functional scope to cover end-to-end scenarios

## Feature

### Extended business logic coverage and user experience

- Sales and purchasing
- Service
- Financials (including fixed assets)
- Payments support (including bank reconciliation and payment wizard and bank statement processing)
- Inventory
- Projects
- Production (including material resource planning)
- Human resources
- Administration and setup

### Analytics, reporting, and printing

- Extended analytics
- Additional reporting content
- Design capabilities
- Support for printing

### Integration and extensibility

- Extensibility capabilities (such as UI API, user-defined values, webhooks)
- Microsoft 365 integration enhancements
- Outlook 365 integration enhancements
- A/P invoice creation automation using SAP Document AI solution

This is the current state of planning and may be changed by SAP at any time.

PUBLIC

This presentation and SAP's strategy and possible future developments are subject to change and may be changed by SAP at any time for any reason without notice. This document is provided without a warranty of any kind, either express or implied, including but not limited to the implied warranties of merchantability, fitness for a particular purpose, or noninfringement.



# Planned innovations: **AI services integration and enablement**

Boost productivity with the latest technology

## Feature

### Enabling partner extensions and integration with SAP AI Services

- SAP's generative AI hub and SAP AI Core services enablement for SAP Business One for partner extensions

### Selected use case scenarios supported by SAP

- Generation of user-defined queries with help of SAP's generative AI hub integration
- Ask GenAI—feeding selected data into questions to be sent to SAP AI Services and receiving contextual responses

### Extensibility

- Open-source support for MCP server to enable SAP Business One for AI agents' adoption with partner extensions

This is the current state of planning and may be changed by SAP at any time.

PUBLIC

This presentation and SAP's strategy and possible future developments are subject to change and may be changed by SAP at any time for any reason without notice. This document is provided without a warranty of any kind, either express or implied, including but not limited to the implied warranties of merchantability, fitness for a particular purpose, or noninfringement.



# Planned innovations: **Globalization**

## Legal compliance and localization enhancements

### Feature

- Legal compliance and localization enhancements (legal requirements, business practice, statutory reporting, and default values)
- Electronic documents framework enhancements and country-specific built-in content using the electronic file manager add-on, electronic documents service, and integration framework
- Electronic documents service component enhancements
- Further integration and leveraging of existing cloud services from SAP for legal adaptations, such as SAP Document and Reporting Compliance

### Country-specific changes

- All: Change log report enhancements
- Czech Republic: New VAT report structure
- France: Support for electronic invoice receiving 2026
- Germany: Adoption of the new ERiC versions for ELSTER
- Germany: Audit and ZM/ELMA files
- India: E-way bill support for stock transfer
- Israel: E-invoice enhancement
- Poland: update for the JPK reports
- Portugal: EBR Imobilizado reports and SAF-T report encryption
- Spain: Business partner consolidation enhancements

This is the current state of planning and may be changed by SAP at any time.

PUBLIC

This presentation and SAP's strategy and possible future developments are subject to change and may be changed by SAP at any time for any reason without notice. This document is provided without a warranty of any kind, either express or implied, including but not limited to the implied warranties of merchantability, fitness for a particular purpose, or noninfringement.



# Planned innovations: **Extensibility**

Extend SAP Business One for verticals and custom scenarios

## Feature

### SAP Business One core

- Enhancement of service layer API
- Web client extensibility (UI API, user-defined values, user-defined objects, user-defined tables)
- Webhooks support
- Side-by-side application support (SAP BTP enablement)

This is the current state of planning and may be changed by SAP at any time.

PUBLIC

This presentation and SAP's strategy and possible future developments are subject to change and may be changed by SAP at any time for any reason without notice. This document is provided without a warranty of any kind, either express or implied, including but not limited to the implied warranties of merchantability, fitness for a particular purpose, or noninfringement.



# Planned innovations:

## Identity and authentication management

Single sign-on experience across SAP Business One components

### Feature

#### Identity and authentication management

- Remember IdP's sign-in preference for SAP Business One desktop in cloud control center environment
- Introduce edit option for existing IdPs in system landscape directory (SLD)
- Support multiple email domain entries for single (OIDC) IdP
- Support setup of additional industry-leading IdPs in SLD
- Consider license key allocation during user unbinding operations
- Enhance central user management in SLD (for example, expose license dimension, show user inactivity)
- Introduce "Forgot My Password" for SAP Business One authentication service users
- Introduce password policy management for SAP Business One authentication service users in SLD

This is the current state of planning and may be changed by SAP at any time.

PUBLIC

This presentation and SAP's strategy and possible future developments are subject to change and may be changed by SAP at any time for any reason without notice. This document is provided without a warranty of any kind, either express or implied, including but not limited to the implied warranties of merchantability, fitness for a particular purpose, or noninfringement.



# Planned innovations: **Integration framework**

## An extremely strong platform

### Feature

#### Integration framework

- Identity and access management user authentication enhancements
- Role management introduction for integration framework
- Basic SAP S/4HANA Cloud Public Edition integration
- Security enhancements

This is the current state of planning and may be changed by SAP at any time.

PUBLIC

This presentation and SAP's strategy and possible future developments are subject to change and may be changed by SAP at any time for any reason without notice. This document is provided without a warranty of any kind, either express or implied, including but not limited to the implied warranties of merchantability, fitness for a particular purpose, or noninfringement.



# Planned innovations:

## Mobile apps for the enterprise

Support flexibility and efficient processes anywhere

### Feature

- Adoption of selected customer feedback and optimizing functionality by delivering enhancements
- User experience enhancements
- Helping ensure compatibility with the latest iOS and Android operating systems
- Security enhancements

This is the current state of planning and may be changed by SAP at any time.

PUBLIC

This presentation and SAP's strategy and possible future developments are subject to change and may be changed by SAP at any time for any reason without notice. This document is provided without a warranty of any kind, either express or implied, including but not limited to the implied warranties of merchantability, fitness for a particular purpose, or noninfringement.



# Planned innovations: Cloud

## Simpler consumption and best scaling

### Feature

#### SAP Business One Cloud, partner-hosted option

- Enhanced tools in SAP Business One Cloud 1.1 control center focusing on hosting partners, improvements for user experience, monitoring, stability, and performance
- Planned lifecycle management optimization:
  - Support for deployment of latest SAP Business One components
  - Performance optimization (such as disabling the logical machine info collection)
  - Backup management (built-in backup management solution for SQL and SAP HANA)
  - License server optimizations (edit and replace license server in existing service unit, license allocation report)
  - IdP setup and consumption (such as import from CSV, leverage Keycloak's 2FA setting for Active Directory users)
  - Certificate optimizations (renewal and readiness for short-lived certificates)
  - Modular and in-place hot fix deployment
- Support for virtualization platforms (such as Azure Virtual Desktop) and latest platform updates
- Security enhancements

#### SAP Business One Cloud, SAP-hosted option

- Security enhancements

This is the current state of planning and may be changed by SAP at any time.

PUBLIC

This presentation and SAP's strategy and possible future developments are subject to change and may be changed by SAP at any time for any reason without notice. This document is provided without a warranty of any kind, either express or implied, including but not limited to the implied warranties of merchantability, fitness for a particular purpose, or noninfringement.



# Learn more about SAP Business One

PUBLIC

This presentation and SAP's strategy and possible future developments are subject to change and may be changed by SAP at any time for any reason without notice. This document is provided without a warranty of any kind, either express or implied, including but not limited to the implied warranties of merchantability, fitness for a particular purpose, or noninfringement.



# Learn more about SAP Business One

- [SAP.com](#)
- [SAP Help Portal](#)
- [SAP Community for SAP Business One](#)
- [SAP Support Portal](#)
- [SAP Partner Portal](#)
- [Customer Influence session](#) (customers and partners only)
- [SAP Business One landing page on SAP Learning portal](#)
- [One pager: SAP Business One learning and enablement offerings](#)



# Thank you.

